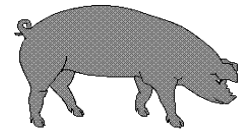




Hog Statistics at a Glance CANADA



For the Week Ending May 23, 2009

Federal Slaughter	weekly kill # head	CUMULATIVE TOTALS TO DATE			Weekly Prices \$/100kg (index 100)			
		2009	2008	% chg	2009	2008	% chg	
		'000 head						
West	124,841	2,999.0	2,962.0	1.2	Ontario*	131.66	144.06	-8.6
Ontario	70,556	1,775.0	1,825.0	-2.7	Quebec	132.25	146.65	-9.8
Quebec-Atlantic	129,557	3,246.0	3,163.0	2.6	Alberta	132.30	140.00	-5.5
CANADA	324,954	8,020.0	7,950.0	0.9	Manitoba*	133.00	152.00	-12.5
Pork Production (t)	30,383	765,108	748,890	2.2	British Columbia	141.30	147.70	-4.3
*Est Sow/Boar Slaughter	1,455	31,299	35,724	-12.4	Saskatchewan	127.00	149.80	-15.2
					Nova Scotia	128.85	143.53	-10.2
					Prince Ed. Is.	128.85	143.53	-10.2
					New Brunswick	124.35	139.03	-10.6

*estimate

*includes federal & provincial slaughter

PORK EXPORTS YTD for the period of January 1 to March 31, 2009

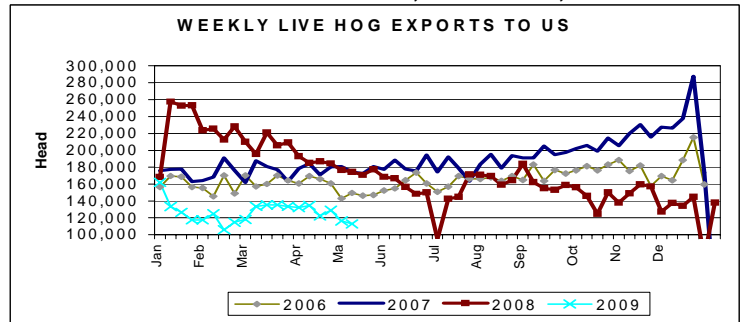
(Metric Tonnes)

FRESH, FROZEN AND PROCESSED PORK	2009	2008	% chg
United States	79,743	77,526	2.9
Japan	59,255	57,221	3.6
Australia	12,785	7,910	61.6
Russia	16,466	27,376	(39.9)
Mexico	10,133	10,061	0.7
South Korea	15,678	17,900	(12.4)
China	5,587	7,591	(26.4)
Taiwan	8,213	3,902	110.5
Cuba	1,988	1,619	22.8
New Zealand	3,049	1,340	127.5
Hong Kong	18,727	22,371	(16.3)
Philippines	11,323	9,150	23.7
Other	21,033	17,696	18.9
Total	263,980	261,663	0.9

Source: STATISTICS CANADA

LIVE HOG EXPORTS TO U.S.

	YTD 09	YTD 08	% chg
HOGS (head)			
Barrows/Gilts/Sows	420,952	1,154,221	-63.5
Feeder Pigs	1,985,796	2,809,944	-29.3
Total	2,406,748	3,964,165	-39.3
Week Ending 09-05-16			
Barrows/Gilts/Sows	19,259	37,813	-49.1
Feeder Pigs	93,678	136,711	-31.5
Total	112,937	174,524	-35.3



Source: USDA-APHIS

IMPORTS YTD for the week ending May 16, 2009

(Metric Tonnes) preliminary

FRESH & FROZEN PORK	2009	2008	% chg	PORK PROCESSED	2009	2008	% chg
United States	33,914	34,641	-2.1	United States	12,394	11,727	5.7
Denmark	3	339	-99.1	Denmark	-	-	-
Other	1	3	-66.7	Other	148	205	-27.8
				TOTAL IMPORTS	46,460	46,915	-1.0

Frozen Pork from the European Union:

The TRQ level has established for frozen meat of pork originating from EU countries, for the twelve month period August 1, 2008 to July 31, 2009. Imports in excess of 2,970,000 kg in the twelve month period are subject to a surtax in an amount equal to the value for the duty (100%) determined in accordance with the Customs Act.

	Permits issued as of May 23, 2009		
	2008/2009	2007/2008	% chg
Utilization (kg)	2,963,633	2,969,997	-0.2
Balance (kg)	6,367	3	
% Utilization	99.8%	100.0%	(0.2)



Hog Statistics at a Glance CANADA

Canadian Hog Slaughter by Province of Origin

Total Slaughter Year to Date May 23, 2009

Week ending May 23, 2009

	Total Slaughter Year to Date May 23, 2009			Week ending May 23, 2009		
	2009	2008	% chg	2009	2008	% chg
British Columbia	77,900	91,616	-15.0	3,124	4,435	-29.6
Alberta	1,002,133	1,260,670	-20.5	41,775	57,261	-27.0
Saskatchewan	410,257	340,384	20.5	19,298	17,514	10.2
Manitoba	1,637,073	1,416,989	15.5	66,845	74,306	-10.0
Ontario	2,000,812	2,108,111	-5.1	81,898	98,971	-17.3
Quebec	3,112,850	2,947,990	5.6	123,480	144,460	-14.5
New Brunswick	28,730	30,189	-4.8	1,000	952	5.0
Nova Scotia	16,983	27,195	-37.6	864	791	9.2
Prince Edward Island	26,204	61,316	-57.3	1,011	3,043	-66.8
CANADA	8,312,942	8,284,460	0.3	339,295	401,733	-15.5

UNITED STATES

Year To Date for the Week Ending May 23, 2009

Supply Summary

	2009	2008	% chg
Slaughter ('000 head)	44,160	46,414	-4.9
Slaughter for the week	2,057	2,101	-2.1
Avg Dressed Wt (lbs)	204	200	2.0
Pork Produced (mil lbs)	9,016	9,414	-4.2

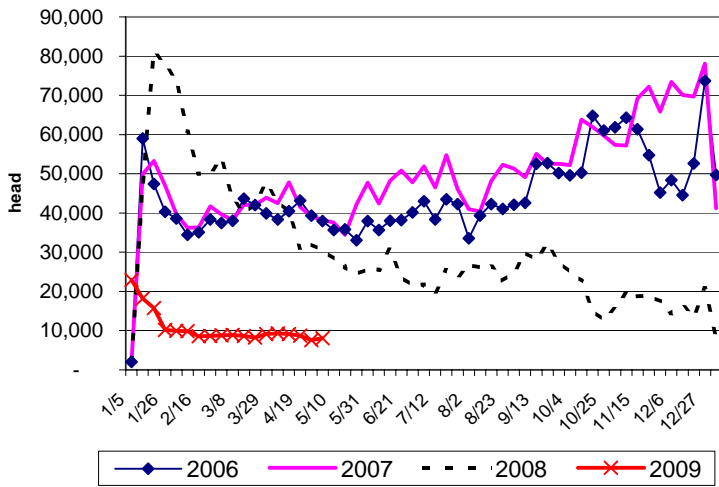
Source: USDA-APHIS

Weekly US Prices (\$/cwt)

	2009	2008	% chg
South St. Joseph	38.00	52.25	-27.3
Sioux Falls	40.00	54.50	-26.6
Oklahoma City	n/a	46.00	
National Cost	58.05	80.81	-28.2

(51-54% Lean Yield Basis)

Canadian Market Hog Exports to the US



Canadian Feeder Hog Exports to the US

