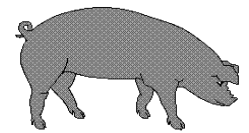




Hog Statistics at a Glance CANADA



For the Week Ending August 2, 2008

Federal Slaughter	weekly kill # head	CUMULATIVE TOTALS TO DATE		
		2008	2007	% chg
		'000 head		
West	143,449	4,476.0	4,734.0	-5.4
Ontario	72,229	2,727.0	2,528.0	7.9
Quebec	155,772	4,673.0	4,544.0	2.8
Atlantic	2,375	125.0	210.0	-40.5
CANADA	373,825	12,001.0	12,016.0	-0.1
Pork Production (t)	32,710	1,056,088	1,051,400	0.4
*Est Sow/Boar Slaughter	2,131	56,473	64,249	-12.1
Cull Swine Breeding Program April 14 - YTD		29,064	-	
TOTAL SOWS/BOARS		85,537	64,249	33.1

*includes federal & provincial slaughter

Weekly Prices \$/100kg (index 100)	2008			2007			% chg
	2008	2007	% chg	2008	2007	% chg	
Ontario*	148.14	138.21	7.2	138.21	138.21	0.0	
Quebec	153.72	132.33	16.2	132.33	132.33	0.0	
Alberta	145.90	134.10	8.8	134.10	134.10	0.0	
Manitoba*	152.00	141.00	7.8	141.00	141.00	0.0	
British Columbia	155.10	147.20	5.4	147.20	147.20	0.0	
Saskatchewan	150.00	139.90	7.2	139.90	139.90	0.0	
Nova Scotia	146.30	136.09	7.5	136.09	136.09	0.0	
Prince Ed. Is.	146.30	134.31	8.9	134.31	134.31	0.0	
New Brunswick	141.80	131.59	7.8	131.59	131.59	0.0	

*estimate

PORK EXPORTS YTD for the period of January 1 - May 31

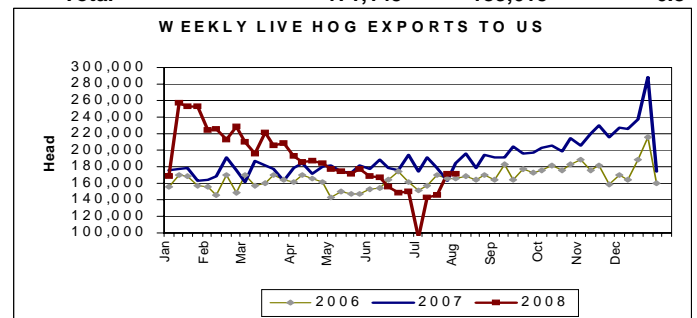
(Metric Tonnes)

FRESH, FROZEN AND PROCESSED PORK	2008	2007	% chg
United States	125,500	149,158	(15.9)
Japan	95,491	100,552	(5.0)
Australia	15,075	18,662	(19.2)
Russia	28,627	32,684	(12.4)
Mexico	17,217	21,317	(19.2)
South Korea	28,979	28,174	2.9
China	20,508	17,842	14.9
Taiwan	8,610	5,216	65.1
Cuba	2,542	2,412	5.4
New Zealand	3,002	4,353	(31.0)
Hong Kong	49,267	4,015	1,127.1
Philippines	17,976	10,642	68.9
Other	33,708	25,220	33.7
Total	446,502	420,247	6.2

Source: STATISTICS CANADA

LIVE HOG EXPORTS TO U.S.

	YTD 08	YTD 07	% chg
HOGS (head)			
Barrows/Gilts/Sows	1,581,242	1,737,554	-9.0
Feeder Pigs	4,247,019	3,756,837	13.0
Total	5,828,261	5,494,391	6.1
Week Ending 08-08-02			
Barrows/Gilts/Sows	35,047	53,340	-34.3
Feeder Pigs	136,098	130,275	4.5
Total	171,145	183,615	-6.8



Source: USDA-APHIS

IMPORTS YTD for the week ending July 26, 2008

(Metric Tonnes) preliminary	2008	2007	% chg	Pork Processed	2008	2007	% chg
FRESH & FROZEN PORK				United States	10,818	11,789	-8.2
United States	56,182	47,732	17.7	Denmark	-	-	-
Denmark	438	829	-47.2	Other	288	182	58.2
Other	3	1	200.0	TOTAL IMPORTS	67,729	60,533	11.9

Frozen Pork from the European Union:

The TRQ level has established for frozen meat of pork originating from EU countries, for the twelve month period August 1, 2008 to July 31, 2009. Imports in excess of 2,970,000 kg in the twelve month period are subject to a surtax in an amount equal to the value for the duty (100%) determined in accordance with the Customs Act.

	Permits issued as of August 2, 2008		
	2008/2009	2007/2008	% chg
Utilization (kg)	2,968,162	2,969,997	-0.1
Balance (kg)	1,838	3	
% Utilization	99.9%	100.0%	(0.1)



Hog Statistics at a Glance CANADA

For the Week Ending August 2, 2008

Total Slaughter Year to Date August 2, 2008

Week ending August 2, 2008

	2008	2007	% chg	2008	2007	% chg
British Columbia	143,554	135,184	6.2	5,113	5,008	2.1
Alberta	1,839,253	1,990,338	-7.6	55,728	64,758	-13.9
Saskatchewan	523,801	592,259	-11.6	19,058	15,218	25.2
Manitoba	2,195,484	2,240,379	-2.0	71,342	69,171	3.1
Ontario	3,145,840	3,053,178	3.0	84,361	102,066	-17.3
Quebec	4,486,905	4,245,156	5.7	151,293	143,227	5.6
New Brunswick	48,831	70,640	-30.9	1,623	1,422	14.1
Nova Scotia	43,525	90,817	-52.1	771	2,647	-70.9
Prince Edward Island	89,587	108,564	-17.5	2,842	2,525	12.6
CANADA	12,516,780	12,526,515	-0.1	392,131	406,042	-3.4

UNITED STATES

Year To Date for the Week Ending August 2, 2008

Supply Summary

	2008	2007	% chg
Slaughter ('000 head)	66,883	61,225	9.2
Slaughter for the week	2,091	1,973	6.0
Avg Dressed Wt (lbs)	197	197	0.0
Pork Produced (mil lbs)	13,456	12,323	9.2

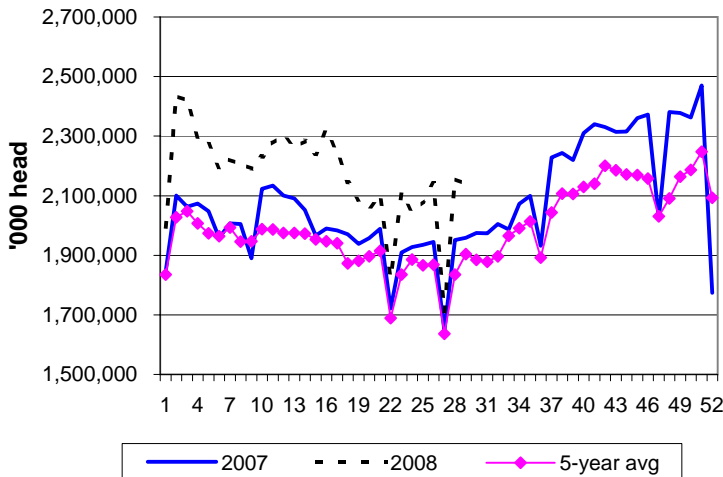
Source: USDA-APHIS

Weekly US Prices (\$/cwt)

	2008	2007	% chg
South St. Joseph	57.00	49.25	15.7
Sioux Falls	63.00	51.50	22.3
Oklahoma City	50.00	45.00	11.1
National Cost	79.58	70.26	13.3

(51-54% Lean Yield Basis)

U.S. Weekly Hog Slaughter



Canadian Weekly Federally Inspected Hog Slaughter

