



Hog Statistics at a Glance CANADA

For the Week Ending December 3, 2011



Federal Slaughter

	weekly kill # head	CUMULATIVE TOTALS TO DATE		
		2011	2010	% chg
		'000 head		
West	161,416	7,567.0	7,564.0	0.0
Ontario	74,803	3,775.0	3,772.0	0.1
Quebec-Atlantic	178,562	7,418.0	7,528.0	-1.5
CANADA	414,781	18,760.0	18,864.0	-0.6
Pork Production (t)	38,782	1,763,440	1,773,216	-0.6
*Estimated Sow/Boar Slaughter	1,487	76,480	68,709	11.3

*Estimated Sow/Boar Slaughter
*includes federal & provincial slaughter

Weekly Prices \$/100kg (index 100)

	2011	2010	% chg
Ontario**	183.46	140.26	30.8
Quebec	162.10	122.91	31.9
Alberta	159.40	124.20	28.3
Manitoba*	155.00	125.85	23.2
British Columbia	162.50	134.40	20.9
Saskatchewan	158.37	123.21	28.5
Nova Scotia	162.26	119.94	35.3
Prince Edward Island	161.41	119.94	34.6
New Brunswick	157.92	115.44	36.8

*Estimate
** As of December 4, 2010 the Ontario hog price changed from an Index 100 price to a Dressed Weight (Total Value FOB yard) price.

PORK EXPORTS

YTD for the period of January 1 to September 30, 2011

(Metric Tonnes)

FRESH, FROZEN AND PROCESSED PORK

	2011	2010	% chg
United States	228,442	250,667	(8.9)
Japan	158,854	176,463	(10.0)
Australia	24,165	33,212	(27.2)
Russia	100,443	64,244	56.3
Mexico	40,250	49,914	(19.4)
South Korea	73,773	38,829	90.0
China	85,547	26,174	226.8
Taiwan	22,786	22,324	2.1
Cuba	1,118	2,677	(58.2)
New Zealand	7,338	7,300	0.5
Hong Kong	18,335	49,077	(62.6)
Philippines	27,730	38,161	(27.3)
Other	52,732	56,480	(6.6)
Total	841,513	815,522	3.2

Source: Statistics Canada

LIVE HOG EXPORTS TO U.S.

Year-to-Date November 26, 2011

HOGS (head)

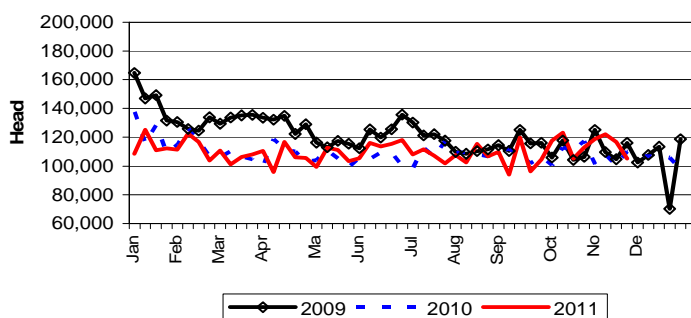
	2011	2010	% chg
Barrows/Gilts/Sows	482,900	982,109	-50.8
Feeder Pigs	4,272,310	4,191,482	1.9
Total	4,755,210	5,173,591	-8.1

Week Ending November 26, 2011

	2011	2010	% chg
Barrows/Gilts/Sows	16,868	16,875	0.0
Feeder Pigs	88,330	93,170	-5.2
Total	105,198	110,045	-4.4

Source: USDA-APHIS

WEEKLY LIVE HOG EXPORTS TO US



IMPORTS

YTD for the week ending December 3, 2011

(Metric Tonnes) preliminary

FRESH & FROZEN PORK

	2011	2010	% chg
United States	125,298	120,937	3.6
Chile	9,101	1,950	366.7
Denmark	1,995	1,006	98.3
Ireland	771	121	537.2
Other	439	798	-45.0

PORK PROCESSED

	2011	2010	% chg
United States	50,491	41,330	22.2
Chile	-	-	-
Denmark	-	-	-
Ireland	-	-	-
Other	1,394	1,233	13.1
Pork Fat	1,095	2,164	-49.4

TOTAL IMPORTS 190,584 169,539 12.4

Note that as of October 7, 2011 data collection methods of CFIA meat import data have been improved; therefore, data comparisons with previous Hog Statistics at a Glance will not be accurate.

Prepared by: Red Meat Section, Agriculture and Agri-Food Canada

Contact: Patti Negrave (613) 773-0226 or e-mail: patti.negrave@agr.gc.ca or see us at: <http://www.agr.gc.ca/redmeat-vianderouge/>

Hog Statistics at a Glance CANADA

Canadian Hog Slaughter by Province of Origin

Total Federal and Provincial Slaughter Year-to-Date December 3, 2011

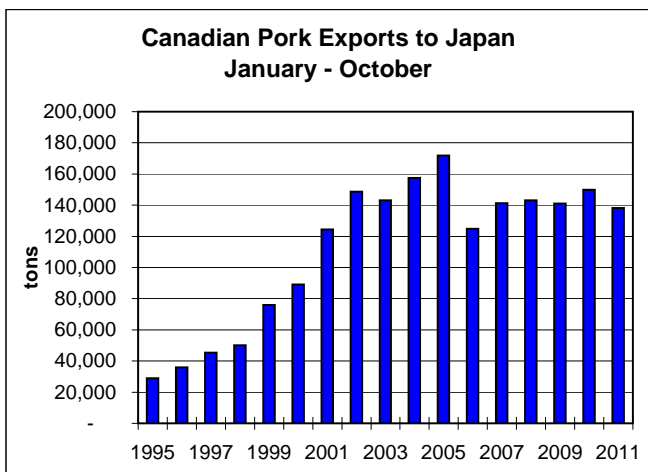
Week ending December 3, 2011

	Total Federal and Provincial Slaughter Year-to-Date December 3, 2011			Week ending December 3, 2011		
	2011	2010	% chg	2011	2010	
British Columbia	157,988	185,711	-14.9	3,518	3,133	12.3
Alberta	2,205,063	2,288,941	-3.7	45,544	46,900	-2.9
Saskatchewan	1,600,437	1,522,064	5.1	31,940	34,638	-7.8
Manitoba	3,957,364	3,916,182	1.1	87,652	87,353	0.3
Ontario	4,495,896	4,362,044	3.1	93,142	96,731	-3.7
Quebec	6,974,698	7,205,420	-3.2	166,626	158,846	4.9
New Brunswick	39,601	57,046	-30.6	580	1,237	-53.1
Nova Scotia	8,529	8,242	3.5	151	147	2.7
Prince Edward Island	76,280	86,467	-11.8	1,113	1,593	-30.1
CANADA	19,515,856	19,632,117	-0.6	430,266	430,578	-0.1

UNITED STATES

Year To Date for the Week Ending December 3, 2011

Supply Summary	2011	2010	% chg	Weekly US Prices (\$/cwt) (weighted weekly average carcass)			
				2011	2010	% chg	
Slaughter ('000 head)	101,161	100,931	0.2	Iowa/Minnesota	83.50	68.01	22.8
Slaughter for the week ('000 head)	2,361	2,325	1.5	Western Cornbelt	83.61	67.99	23.0
Avg Dressed Wt (lbs)	208	208	0.0	Eastern Cornbelt	83.58	67.85	23.2
Pork Produced (mil lbs)	20,767	20,537	1.1	National	83.64	67.94	23.1



Source: ALIC

