



# Hog Statistics at a Glance CANADA



For the Week Ending December 5, 2009

Federal Slaughter	weekly kill # head	CUMULATIVE TOTALS TO DATE		
		2009	2008	% chg
		'000 head		
West	168,617	7,463.0	7,012.0	6.4
Ontario	89,409	4,245.0	4,299.0	-1.3
Quebec-Atlantic	177,043	7,683.0	7,561.0	1.6
<b>CANADA</b>	<b>435,069</b>	<b>19,391.0</b>	<b>18,872.0</b>	<b>2.8</b>
<b>Pork Production (t)</b>	<b>40,679</b>	<b>1,818,876</b>	<b>1,756,983</b>	<b>3.5</b>
*Est Sow/Boar Slaughter	1,655	69,183	75,754	-8.7

Weekly Prices \$/100kg (index 100)	2009			2008			% chg
	2009	2008	% chg	2009	2008	% chg	
Ontario*	111.04	116.89	-5.0				
Quebec	111.09	109.46	1.5				
Alberta	111.70	121.10	-7.8				
Manitoba*	114.00	120.87	-5.7				
British Columbia	124.80	134.60	-7.3				
Saskatchewan	106.40	118.00	-9.8				
Nova Scotia	107.76	117.29	-8.1				
Prince Ed. Is.	107.76	117.29	-8.1				
New Brunswick	103.26	112.79	-8.4				

\*estimate

\*includes federal & provincial slaughter

## PORK EXPORTS YTD for the period of January 1 to October 31, 2009

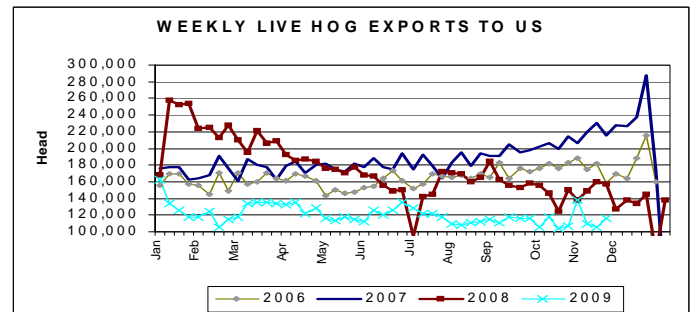
(Metric Tonnes)

FRESH, FROZEN AND PROCESSED PORK	2009	2008	% chg
United States	268,640	248,769	8.0
Japan	186,227	194,300	(4.2)
Australia	42,484	29,586	43.6
Russia	51,884	107,587	(51.8)
Mexico	33,166	35,186	(5.7)
South Korea	52,870	55,983	(5.6)
China	24,272	30,502	(20.4)
Taiwan	32,041	21,588	48.4
Cuba	4,145	4,265	(2.8)
New Zealand	9,949	7,004	42.0
Hong Kong	59,568	79,474	(25.0)
Philippines	37,017	30,753	20.4
Other	77,777	70,838	9.8
<b>Total</b>	<b>880,040</b>	<b>915,835</b>	<b>(3.9)</b>
<b>Total (Jan 1 to Dec 31, 2008)</b>		<b>1,094,499</b>	

Source: STATISTICS CANADA

## LIVE HOG EXPORTS TO U.S.

	YTD 09	YTD 08	% chg
<b>HOGS (head)</b>			
Barrows/Gilts/Sows	1,063,937	2,124,079	-49.9
Feeder Pigs	4,588,997	6,192,617	-25.9
<b>Total</b>	<b>5,652,934</b>	<b>8,316,696</b>	<b>-32.0</b>
<b>Week Ending November 28, 2009</b>			
Barrows/Gilts/Sows	16,718	31,024	-46.1
Feeder Pigs	99,369	126,233	-21.3
<b>Total</b>	<b>116,087</b>	<b>157,257</b>	<b>-26.2</b>



Source: USDA-APHIS

## IMPORTS YTD for the week ending November 28, 2009

(Metric Tonnes) preliminary	2009	2008	% chg	PORK PROCESSED	2009	2008	% chg
<b>FRESH &amp; FROZEN PORK</b>				United States	35,248	31,075	13.4
United States	87,368	90,681	-3.7	Denmark	-	-	
Denmark	3	522	-99.4	Other	1,068	611	74.8
Other	2	10	-80.0	<b>TOTAL IMPORTS</b>	<b>123,689</b>	<b>122,899</b>	<b>0.6</b>

### Frozen Pork from the European Union:

The TRQ level has established for frozen meat of pork originating from EU countries, for the twelve month period August 1, 2009 to July 31, 2010. Imports in excess of 2,970,000 kg in the twelve month period are subject to a surtax in an amount equal to the value for the duty (100%) determined in accordance with the Customs Act.

	Permits issued as of December 5, 2009		
	2009/2010	2008/2009	% chg
Utilization (kg)	2,949,330	2,961,414	-0.4
Balance (kg)	20,670	8,586	140.7
% Utilization	99.3%	99.7%	(0.4)



## Hog Statistics at a Glance CANADA

For the Week Ending December 5, 2009

Total Slaughter Year to Date December 5, 2009

Week ending December 5, 2009

	2009	2008	% chg	2009	2008	% chg
British Columbia	202,844	223,096	-9.1	4,928	4,351	13.3
Alberta	2,410,409	2,779,253	-13.3	50,343	59,011	-14.7
Saskatchewan	1,154,854	836,491	38.1	30,863	18,498	66.8
Manitoba	4,027,732	3,518,777	14.5	89,758	87,526	2.6
Ontario	4,872,326	4,908,790	-0.7	102,888	106,481	-3.4
Quebec	7,318,138	7,144,369	2.4	169,190	169,164	0.0
New Brunswick	68,611	73,713	-6.9	1,552	1,669	-7.0
Nova Scotia	21,203	55,708	-61.9	188	717	-73.8
Prince Edward Island	76,586	124,587	-38.5	1,984	1,457	36.2
<b>CANADA</b>	<b>20,152,703</b>	<b>19,664,784</b>	<b>2.5</b>	<b>451,694</b>	<b>448,874</b>	<b>0.6</b>

## UNITED STATES

Year To Date for the Week Ending December 5, 2009

### Supply Summary

	2009	2008	% chg
Slaughter ('000 head)	104,711	107,739	-2.8
Slaughter for the week	2,267	2,368	-4.3
Avg Dressed Wt (lbs)	204	204	0.0
Pork Produced (mil lbs)	21,232	21,614	-1.8

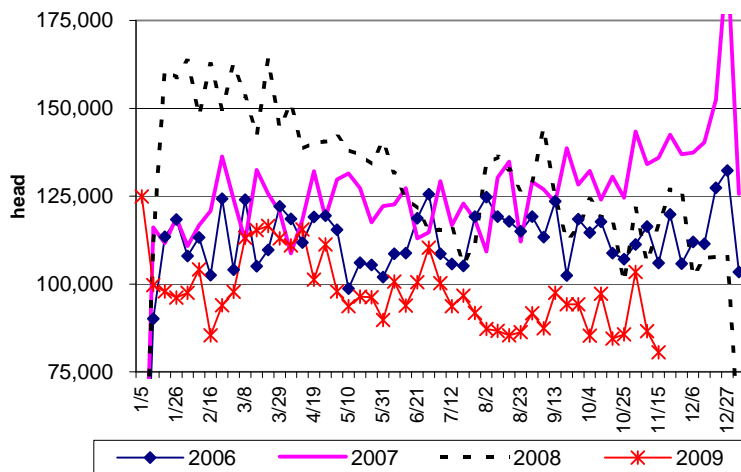
Source: USDA-APHIS

### Weekly US Prices (\$/cwt)

	2009	2008	% chg
South St. Joseph	37.50	37.75	-0.7
Sioux Falls	44.00	n/a	
Oklahoma City	34.00	33.00	3.0
National Cost	57.50	51.93	10.7

(51-54% Lean Yield Basis)

Canadian Feeder Hog Exports to the US



Canadian Market Hog Exports to the US

