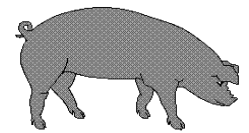




Hog Statistics at a Glance CANADA



For the Week Ending December 6, 2008

Federal Slaughter	weekly kill # head	CUMULATIVE TOTALS TO DATE		
		2008	2007	% chg
		'000 head		
West	160,327	7,173.0	7,399.0	-3.1
Ontario	95,079	4,385.0	4,134.0	6.1
Quebec	168,746	7,566.0	7,298.0	3.7
Atlantic	2,239	166.0	325.0	-48.9
CANADA	426,391	19,290.0	19,156.0	0.7
Pork Production (t)	37,309	1,697,520	1,676,150	1.3
*Est Sow/Boar Slaughter	1,969	87,875	93,762	-6.3
Cull Swine Breeding Program April 14 - YTD		44,620	-	
TOTAL SOWS/BOARS		132,495	93,762	41.3

*includes federal & provincial slaughter

Weekly Prices \$/100kg (index 100)	2008		
	2008	2007	% chg
Ontario*	119.04	91.73	29.8
Quebec	110.19	79.89	37.9
Alberta	126.50	96.50	31.1
Manitoba*	127.00	99.00	28.3
British Columbia	135.20	107.80	25.4
Saskatchewan	123.50	96.20	28.4
Nova Scotia	118.22	88.90	33.0
Prince Ed. Is.	118.22	88.19	34.1
New Brunswick	113.72	84.40	34.7

*estimate

PORK EXPORTS YTD for the period of January 1 - September 30

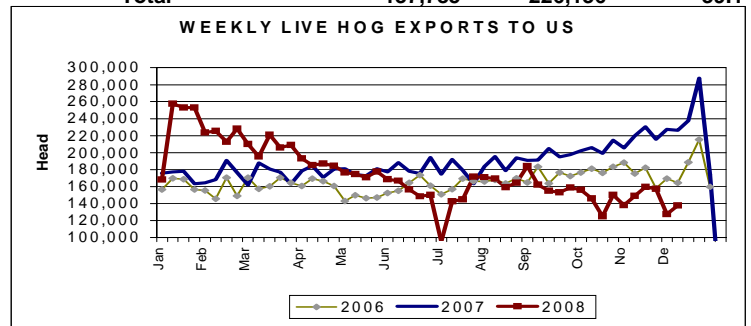
(Metric Tonnes)

FRESH, FROZEN AND PROCESSED PORK	2008	2007	% chg
United States	221,085	270,494	(18.3)
Japan	173,636	170,847	1.6
Australia	26,141	30,067	(13.1)
Russia	90,653	56,979	59.1
Mexico	31,919	39,356	(18.9)
South Korea	49,981	45,836	9.0
China	28,900	38,128	(24.2)
Taiwan	20,525	10,226	100.7
Cuba	3,774	3,170	19.1
New Zealand	6,361	8,221	(22.6)
Hong Kong	72,582	9,458	667.4
Philippines	28,636	19,395	47.6
Other	63,623	42,724	48.9
Total	817,816	744,901	9.8

Source: STATISTICS CANADA

LIVE HOG EXPORTS TO U.S.

	YTD 08	YTD 07	% chg
HOGS (head)			
Barrows/Gilts/Sows	2,179,474	3,057,360	-28.7
Feeder Pigs	6,402,402	6,131,714	4.4
Total	8,581,876	9,189,074	-6.6
Week Ending 08-12-06			
Barrows/Gilts/Sows	30,332	85,864	-64.7
Feeder Pigs	107,453	140,272	-23.4
Total	137,785	226,136	-39.1



Source: USDA-APHIS

IMPORTS YTD for the week ending November 29, 2008

(Metric Tonnes) preliminary	2008	2007	% chg	Pork Processed	2008	2007	% chg
FRESH & FROZEN PORK				United States	19,171	20,334	-5.7
United States	92,591	89,273	3.7	Denmark	-	-	
Denmark	522	1,378	-62.1	Other	543	343	58.3
Other	10	101	-90.1	TOTAL IMPORTS	112,837	111,429	1.3

Frozen Pork from the European Union:

The TRQ level has established for frozen meat of pork originating from EU countries, for the twelve month period August 1, 2008 to July 31, 2009. Imports in excess of 2,970,000 kg in the twelve month period are subject to a surtax in an amount equal to the value for the duty (100%) determined in accordance with the Customs Act.

	Permits issued as of December 6, 2008		
	2008/2009	2007/2008	% chg
Utilization (kg)	2,963,633	2,969,997	-0.2
Balance (kg)	6,367	3	
% Utilization	99.8%	100.0%	(0.2)



Hog Statistics at a Glance CANADA

For the Week Ending December 6, 2008

Total Slaughter Year to Date December 6, 2008

Week ending December 6, 2008

	2008	2007	% chg	2008	2007	% chg
British Columbia	228,002	222,307	2.6	4,906	4,638	5.8
Alberta	2,862,676	3,156,527	-9.3	58,828	63,567	-7.5
Saskatchewan	851,759	869,981	-2.1	20,229	15,908	27.2
Manitoba	3,584,620	3,508,426	2.2	83,653	73,995	13.1
Ontario	5,018,054	4,949,942	1.4	105,180	112,084	-6.2
Quebec	7,304,351	6,855,656	6.5	165,715	151,428	9.4
New Brunswick	75,713	109,641	-30.9	2,000	2,681	-25.4
Nova Scotia	45,751	133,804	-65.8	608	1,930	-68.5
Prince Edward Island	125,688	172,284	-27.0	2,140	3,644	-41.3
CANADA	20,096,614	19,978,568	0.6	443,259	429,875	3.1

UNITED STATES

Year To Date for the Week Ending December 6, 2008

Supply Summary

	2008	2007	% chg
Slaughter ('000 head)	107,762	101,138	6.5
Slaughter for the week	2,373	2,377	-0.2
Avg Dressed Wt (lbs)	203	205	-1.0
Pork Produced (mil lbs)	21,614	20,344	6.2

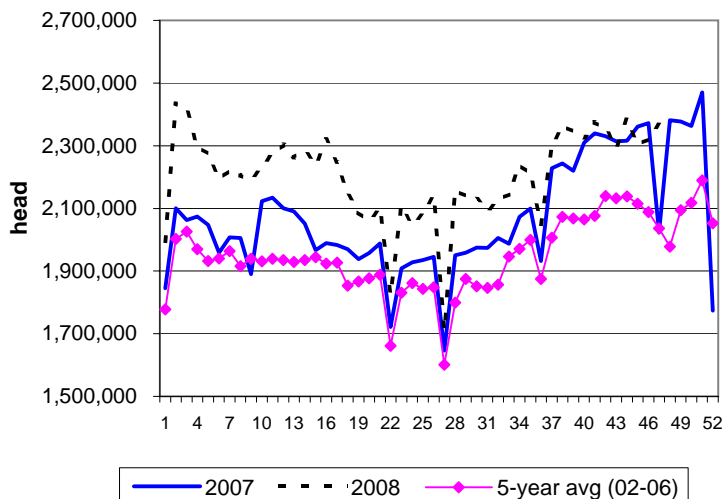
Source: USDA-APHIS

Weekly US Prices (\$/cwt)

	2008	2007	% chg
South St. Joseph	n/a	n/a	
Sioux Falls	42.00	39.00	7.7
Oklahoma City	34.00	30.00	13.3
National Cost	54.12	52.04	4.0

(51-54% Lean Yield Basis)

US Weekly Hog Slaughter



Canadian Weekly Federally Inspected Hog Slaughter

