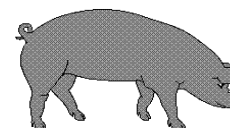




# Hog Statistics at a Glance CANADA



For the Week Ending January 5, 2008

## Federal Slaughter

	weekly kill # head	CUMULATIVE TOTALS TO DATE		
		2008	2007	% chg
		'000 head		
West	106,955	107.0	136.0	-21.3
Ontario	81,403	81.0	71.0	14.1
Quebec	90,977	91.0	86.0	5.8
Atlantic	4,223	4.0	8.0	-50.0
<b>CANADA</b>	<b>283,558</b>	<b>283.0</b>	<b>301.0</b>	<b>-6.0</b>
<b>Pork Production (t)</b>	<b>24,811</b>	<b>24,904</b>	<b>26,338</b>	<b>-5.4</b>
<b>*Est Sow/Boar Slaughter</b>	<b>1,206</b>	<b>1,206</b>	<b>1,580</b>	<b>-23.7</b>

\*Est Sow/Boar Slaughter  
\*revised includes fed & prov

## Weekly Prices \$/100kg (index 100)

	2008	2007	% chg
Ontario*	75.49	128.63	-41.3
Quebec	80.00	120.00	-33.3
Alberta	94.00	124.00	-24.2
Manitoba*	90.00	127.00	-29.1
British Columbia	110.00	141.05	-22.0
Saskatchewan	88.60	115.70	-23.4
Nova Scotia	93.59	128.06	-26.9
Prince Ed. Is.	95.66	124.66	-23.3
New Brunswick	89.09	123.56	-27.9

\*estimate

## PORK EXPORTS

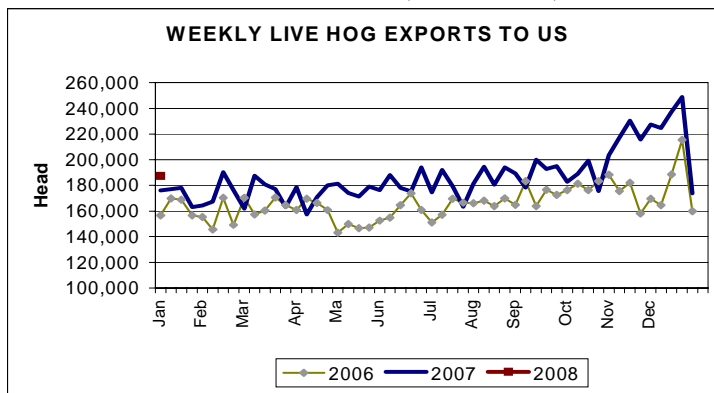
YTD for the period of January 1 - October 31

(Metric Tonnes)	2007	2006	% chg
<b>FRESH, FROZEN AND PROCESSED PORK</b>			
United States	300,436	300,005	0.1
Japan	185,840	183,406	1.3
Australia	35,227	30,329	16.1
Russia	66,113	76,927	(14.1)
Mexico	43,446	44,939	(3.3)
South Korea	52,466	61,425	(14.6)
China	39,019	35,638	9.5
Taiwan	11,700	10,335	13.2
Cuba	3,619	5,989	(39.6)
New Zealand	9,002	7,799	15.4
Other	80,348	110,653	(27.4)
<b>Total</b>	<b>827,216</b>	<b>867,445</b>	<b>(4.6)</b>

Source: STATISTICS CANADA

## LIVE HOG EXPORTS TO U.S.

	YTD 08	YTD 07	% chg
<b>HOGS (head)</b>			
Barrows/Gilts/Sows	62,917	59,884	5.1
Feeder Pigs	124,431	116,044	7.2
<b>Total</b>	<b>187,348</b>	<b>175,928</b>	<b>6.5</b>
<b>Week Ending 08-01-05</b>			
Barrows/Gilts/Sows	62,917	59,884	5.1
Feeder Pigs	124,431	116,044	7.2
<b>Total</b>	<b>187,348</b>	<b>175,928</b>	<b>6.5</b>



Source: USDA-APHIS

## IMPORTS

YTD for the week ending 07-12-29

(Metric Tonnes) preliminary	2007	2006	% chg	Pork Processed	2007	2006	% chg
<b>FRESH &amp; FROZEN PORK</b>				United States	22,143	19,217	15.2
United States	95,614	88,369	8.2	Denmark	-	13	
Denmark	1,449	287		Other	349	172	102.9
Other	102	3		<b>TOTAL IMPORTS</b>	<b>119,657</b>	<b>108,061</b>	<b>10.7</b>

## Frozen Pork from the European Union:

The TRQ level has established for frozen meat of pork originating from EU countries, for the twelve month period August 1 to July 31, 2008. Imports in excess of 2,970,000 kg in the twelve month period are subject to a surtax in an amount equal to the value for the duty (100%) determined in accordance with the Customs Act.

	Permits issued as of January 5, 2008		
	2007/2008	2006/2007	% chg
Utilization (kg)	2,969,997	2,970,000	0.0
Balance (kg)	3	-	
% Utilization	100.0%	100.0%	(0.0)

Prepared by: Red Meat Section, Agriculture and Agri-Food Canada

Contact: Patti Negrave (613) 759-6216 or see us at: <http://www.agr.ca/redmeat>



# Hog Statistics at a Glance CANADA

For the Week Ending January 5, 2008

Total Slaughter Year to Date January 5, 2008

Week ending January 5, 2008

	2008	2007	% chg	2008	2007	% chg
British Columbia	4,242	4,346	-2.4	4,242	4,346	-2.4
Alberta	37,865	56,032	-32.4	37,865	56,032	-32.4
Saskatchewan	13,952	19,317	-27.8	13,952	19,317	-27.8
Manitoba	57,796	63,373	-8.8	57,796	63,373	-8.8
Ontario	93,463	89,699	4.2	93,463	89,699	4.2
Quebec	87,847	76,370	15.0	87,847	76,370	15.0
New Brunswick	1,306	2,270	-42.5	1,306	2,270	-42.5
Nova Scotia	1,960	3,324	-41.0	1,960	3,324	-41.0
Prince Edward Island	2,360	4,049	-41.7	2,360	4,049	-41.7
<b>CANADA</b>	<b>300,791</b>	<b>318,780</b>	<b>-5.6</b>	<b>300,791</b>	<b>318,780</b>	<b>-5.6</b>

## UNITED STATES

Year To Date for the Week Ending January 5, 2008

### Supply Summary

	2008	2007	% chg
Slaughter ('000 head)	1,624	1,845	-12.0
Slaughter for the week	2,009	1,845	8.9
Avg Dressed Wt (lbs)	204	204	0.0
Pork Produced (mil lbs)	331	377	-12.1

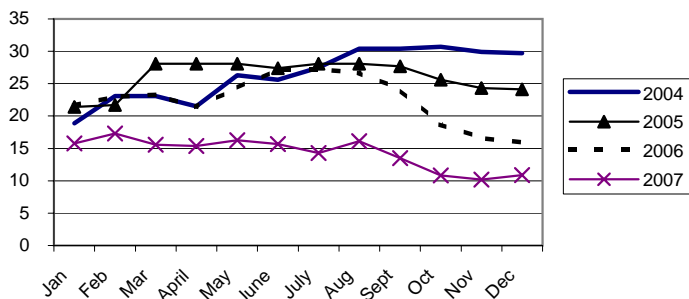
Source: USDA-APHIS

### Weekly US Prices (\$/cwt)

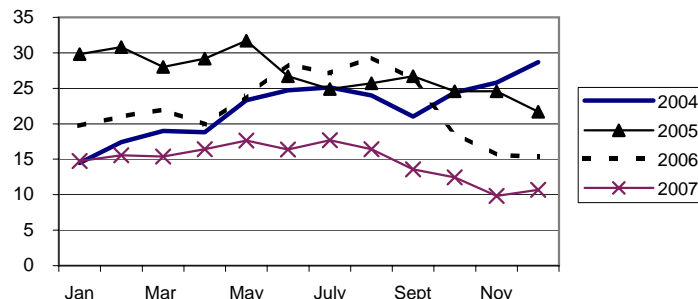
	2008	2007	% chg
South St. Joseph	27.75	36.75	-24.5
Sioux Falls	31.00	n/a	
Oklahoma City	26.00	34.00	-23.5
National Cost	47.54	56.30	-15.6

(51-54% Lean Yield Basis)

Alberta Hog/Barley Ratio



Ontario Hog/Corn Ratio



The ratio represents the number of bushels of feed barley or corn, that are equal in value to 100 lbs. of index 100 live hog.