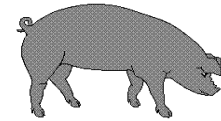




# Hog Statistics at a Glance CANADA



For the Week Ending July 2, 2005

Federal Slaughter	weekly kill # head	CUMULATIVE TOTALS TO DATE		
		2005	2004	% chg
		'000 head		
West	132,284	4,380.0	4,230.0	3.5
Ontario	63,569	2,072.0	2,072.0	0.0
Quebec	123,605	4,067.0	4,065.0	0.0
Atlantic	7,647	222.0	247.0	-10.1
<b>CANADA</b>	<b>327,105</b>	<b>10,741.0</b>	<b>10,614.0</b>	<b>1.2</b>
<b>Pork Production (t)</b>	<b>28,622</b>	<b>939,838</b>	<b>925,541</b>	<b>1.5</b>
<b>Estimated Sow Slaughter</b>	<b>1,832</b>	<b>60,464</b>	<b>64,649</b>	<b>-6.5</b>

Weekly Prices \$/c/kg (index 100)	2005			2004			% chg
	2005	2004	% chg	2004	% chg		
Ontario*	149.85	198.80	-24.6				
Quebec	149.16	193.44	-22.9				
Alberta	147.20	193.70	-24.0				
Manitoba*	153.00	194.00	-21.1				
British Columbia	164.90	210.20	-21.6				
Saskatchewan	130.40	185.00	-29.5				
Nova Scotia	157.87	200.23	-21.2				
Prince Ed. Is.	145.86	194.71	-25.1				
New Brunswick	153.37	195.73	-21.6				

\*estimate

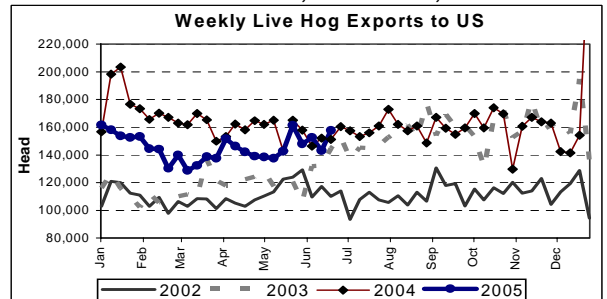
## PORK EXPORTS YTD for the period of January to April 30, 2005

(Metric Tonnes)	2005	2004	% chg
<b>FRESH, FROZEN AND PROCESSED PORK</b>			
United States	121,964	133,757	(8.8)
Japan	96,134	72,703	32.2
Australia	17,303	11,540	49.9
Russia	8,257	4,621	78.7
Mexico	19,908	20,571	(3.2)
South Korea	21,035	9,803	114.6
China	13,686	9,289	47.3
Taiwan	7,065	8,291	(14.8)
Cuba	738	3,496	(78.9)
New Zealand	1,759	1,503	17.0
Other	32,736	28,681	14.1
<b>Total</b>	<b>340,585</b>	<b>304,255</b>	<b>11.9</b>

Source: STATISTICS CANADA

## LIVE HOG EXPORTS TO U.S.

	YTD 05	YTD 04	% chg
<b>HOGS (head)</b>			
Barrows/Gilts/Sows	1,178,383	1,374,153	-14.2
Feeder Pigs	2,457,981	2,728,676	-9.9
<b>Total</b>	<b>3,636,364</b>	<b>4,102,829</b>	<b>-11.4</b>
<b>Week Ending 05-06-25</b>			
Barrows/Gilts/Sows	52,353	44,438	17.8
Feeder Pigs	105,322	106,733	-1.3
<b>Total</b>	<b>157,675</b>	<b>151,171</b>	<b>4.3</b>



Source: USDA-APHIS

## IMPORTS YTD for the week ending 05-06-25

(Metric Tonnes) preliminary	2005	2004	% chg
<b>FRESH &amp; FROZEN PORK</b>			
United States	40,423	34,786	16.2
Denmark	1,639	288	469.1
Other	27	3	

PROCESSED & OTHER PORK	2005	2004	% chg
United States	7,235	7,216	0.3
Denmark	-	-	
Other	47	69	-31.9
<b>TOTAL IMPORTS</b>	<b>49,371</b>	<b>42,362</b>	<b>16.5</b>

## Frozen Pork from the European Union:

The TRQ level has established for frozen meat of pork originating from EU countries, for the twelve month period August 1 to July 31, 2005. Imports in excess of 2,970,000 kg in the twelve month period are subject to a surtax in an amount equal to the value for the duty (100%) determined in accordance with the Customs Act.

	Permits issued as of July 2, 2005		
	2004/2005	2003/2004	% chg
Utilization (kg)	2,969,899	2,970,000	0.0
Balance (kg)	101	-	
% Utilization	100.0%	100.0%	(0.0)

Prepared by: Red Meat Section, Agriculture and Agri-Food Canada

Contact: Patti Negrave (613) 759-6216 or see us at: <http://www.agr.ca/redmeat>



# Hog Statistics at a Glance CANADA

## Canadian Hog Slaughter by Province of Origin

Total Slaughter Year to Date July 2, 2005

	2005	2004	% chg
British Columbia	115,300	122,979	-6.2
Alberta	1,734,594	1,722,801	0.7
Saskatchewan	647,736	668,853	-3.2
Manitoba	2,079,529	1,935,214	7.5
Ontario	2,631,910	2,601,975	1.2
Quebec	3,702,123	3,757,240	-1.5
New Brunswick	76,991	80,807	-4.7
Nova Scotia	89,769	99,746	-10.0
Prince Edward Island	107,167	113,033	-5.2
<b>CANADA</b>	<b>11,185,119</b>	<b>11,102,648</b>	<b>0.7</b>

Week ending July 2, 2005

	2005	2004	% chg
British Columbia	4,342	4,564	-4.9
Alberta	54,526	67,899	-19.7
Saskatchewan	16,634	26,417	-37.0
Manitoba	63,496	73,008	-13.0
Ontario	82,155	99,977	-17.8
Quebec	112,805	122,828	-8.2
New Brunswick	2,525	3,470	-27.2
Nova Scotia	3,529	3,624	-2.6
Prince Edward Island	3,444	3,661	-5.9
<b>CANADA</b>	<b>343,456</b>	<b>405,448</b>	<b>-15.3</b>

# UNITED STATES

## Year To Date for the Week Ending July 2, 2005

### Supply Summary

	2005	2004	% chg
Slaughter ('000 head)	50,443	50,618	-0.3
Slaughter for the week	1,879	1,815	3.5
Avg Dressed Wt (lbs)	226	204	10.8
Pork Produced (mil lbs)	10,143	10,075	0.7

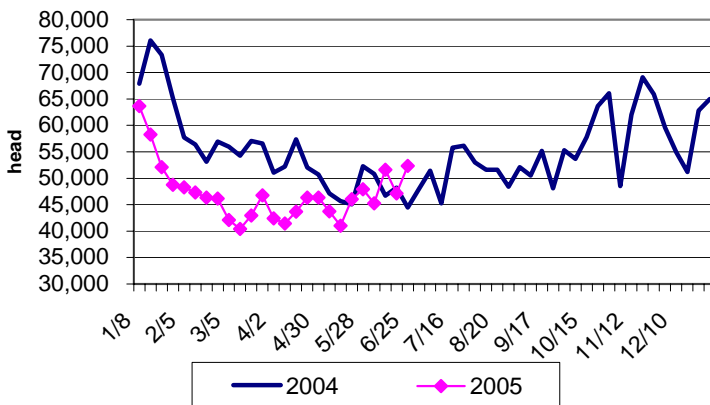
Source: USDA-APHIS

### Weekly US Prices (\$/cwt)

	2005	2004	% chg
South St. Joseph	46.25	56.25	-17.8
Sioux Falls	47.25	58.35	-19.0
Oklahoma City	no quote	54.50	
National Cost	64.11	79.46	-19.3

(51-54% Lean Yield Basis)

US IMPORTS OF CANADIAN MARKET HOGS



U.S. IMPORTS OF CANADIAN FEEDER HOGS

