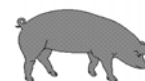




Hog Statistics at a Glance CANADA



For the Week Ending July 2, 2011

Federal Slaughter	CUMULATIVE TOTALS TO DATE			
	weekly kill # head	2011 '000 head	2010 '000 head	% chg
West	128,016	4,051.0	4,104.0	-1.3
Ontario	63,375	2,002.0	2,070.0	-3.3
Quebec-Atlantic	127,888	3,960.0	4,072.0	-2.8
CANADA	319,279	10,013.0	10,246.0	-2.3
Pork Production (t)	29,853	941,222	963,124	-2.3
*Estimated Sow/Boar Slaughter	1,279	42,244	38,205	10.6

*Estimated Sow/Boar Slaughter
**includes federal & provincial slaughter

Weekly Prices \$/100kg (index 100)	2011			2010		
	2011	2010	% chg	2011	2010	% chg
Ontario**	n/a	152.71				
Quebec	183.43	156.21	17.4			
Alberta	181.30	147.35	23.0			
Manitoba*	174.00	149.22	16.6			
British Columbia	178.70	155.80	14.7			
Saskatchewan	177.30	145.30	22.0			
Nova Scotia	178.66	154.64	15.5			
Prince Ed. Is.	178.66	154.64	15.5			
New Brunswick	174.16	150.14	16.0			

*Estimate
** As of December 4, 2010 the Ontario hog price changed from an Index 100 price to a Dressed Weight (Total Value FOB yard) price.

PORK EXPORTS

YTD for the period of January 1 to April 30, 2011

(Metric Tonnes)

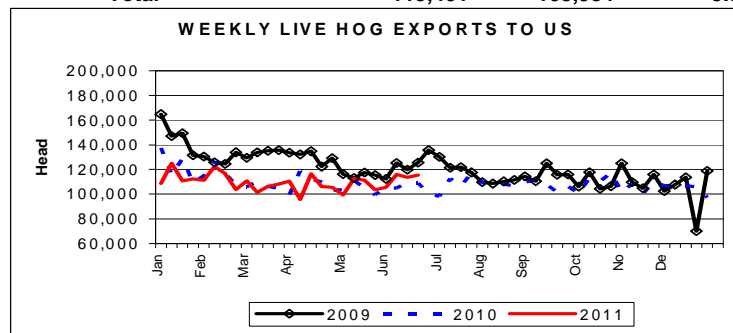
FRESH, FROZEN AND PROCESSED PORK

	2011	2010	% chg
United States	101,289	102,382	(1.1)
Japan	74,798	80,241	(6.8)
Australia	10,663	15,559	(31.5)
Russia	40,903	33,815	21.0
Mexico	18,409	17,956	2.5
South Korea	44,480	20,438	117.6
China	25,914	4,981	420.3
Taiwan	11,020	9,044	21.8
Cuba	822	1,893	(56.6)
New Zealand	3,186	2,080	53.2
Hong Kong	7,404	28,323	(73.9)
Philippines	11,458	19,127	(40.1)
Other	23,136	30,333	(23.7)
Total	373,482	366,172	2.0

Source: STATISTICS CANADA

LIVE HOG EXPORTS TO U.S.

	Year-to-Date June 25, 2011	2011	2010	% chg
HOGS (head)				
Barrows/Gilts/Sows	482,930	514,199	-6.1	
Feeder Pigs	2,266,415	2,260,332	0.3	
Total	2,749,345	2,774,531	-0.9	
Week Ending June 25, 2011				
Barrows/Gilts/Sows	19,597	20,845	-6.0	
Feeder Pigs	95,804	88,139	8.7	
Total	115,401	108,984	5.9	



Source: USDA-APHIS

IMPORTS

YTD for the week ending June 25, 2011

(Metric Tonnes) preliminary

FRESH & FROZEN PORK

	2011	2010	% chg
United States	51,297	47,880	7.1
Denmark	26	-	
Other	2	3	-33.3

	2011	2010	% chg
PORK PROCESSED			
United States	23,671	20,927	13.1
Denmark	-	-	
Other	287	259	10.8
TOTAL IMPORTS	75,283	69,069	9.0

Frozen Pork from the European Union:

The TRQ level has established for frozen meat of pork originating from EU countries, for the twelve month period August 1, 2010 to July 31, 2011. Imports in excess of 2,970,000 kg in the twelve month period are subject to a surtax in an amount equal to the value for the duty (100%) determined in accordance with the Customs Act.

	Permits issued as of July 2, 2011		
	2010/2011	2009/2010	% chg
Utilization (kg)	2,963,386	2,949,330	0.5
Balance (kg)	6,614	20,670	-68.0
% Utilization	99.8%	99.3%	0.5

Prepared by: Red Meat Section, Agriculture and Agri-Food Canada

Contact: Patti Negrave (613) 773-0226 or e-mail: patti.negrave@agr.gc.ca or see us at: <http://www.agr.ca/redmeat>



Hog Statistics at a Glance CANADA

Canadian Hog Slaughter by Province of Origin

Total Federal and Provincial Slaughter Year-to-Date July 2, 2011

Week ending July 2, 2011

	Total Federal and Provincial Slaughter Year-to-Date July 2, 2011			Week ending July 2, 2011		
	2011	2010	% chg	2011	2010	
British Columbia	80,878	104,071	-22.3	3,250	3,505	-7.3
Alberta	1,198,278	1,266,871	-5.4	39,360	40,540	-2.9
Saskatchewan	859,800	808,717	6.3	27,163	27,991	-3.0
Manitoba	2,101,411	2,108,348	-0.3	65,479	64,933	0.8
Ontario	2,373,504	2,353,495	0.9	76,981	72,517	6.2
Quebec	3,722,712	3,924,655	-5.1	120,694	127,865	-5.6
New Brunswick	23,530	30,477	-22.8	538	1,107	-51.4
Nova Scotia	4,081	4,387	-7.0	147	186	-21.0
Prince Edward Island	47,068	47,635	-1.2	1,782	1,540	15.7
CANADA	10,411,262	10,648,656	-2.2	335,394	340,184	-1.4

UNITED STATES

Year To Date for the Week Ending July 2, 2011

Supply Summary

	2011	2010	% chg
Slaughter ('000 head)	53,478	53,997	-1.0
Slaughter for the week	1,945	1,964	-1.0
Avg Dressed Wt (lbs)	205	201	2.0
Pork Produced (mil lbs)	11,087	10,981	1.0

Source: USDA-APHIS

Weekly US Prices (\$/cwt)

(weighted weekly average carcass)

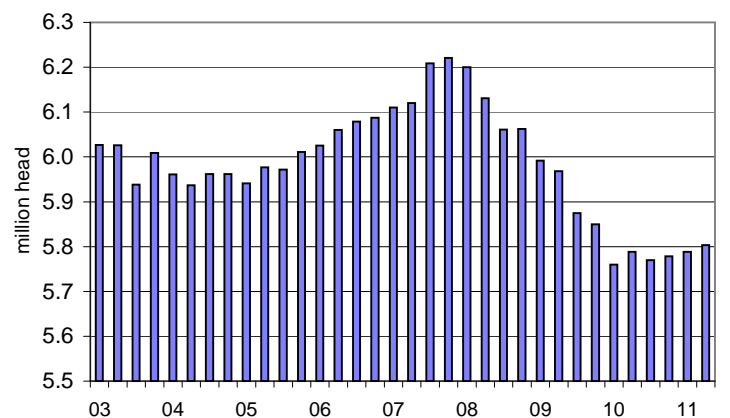
	2011	2010	% chg
Iowa/Minnesota	95.40	76.57	24.6
Western Cornbelt	95.55	76.74	24.5
Eastern Cornbelt	93.29	76.64	21.7
National	96.87	77.22	25.4

June Hogs and Pigs Inventory - United States

	2011	2010	% chg
		000 head	
All Hogs and Pigs	65,000	64,650	0.5%
Kept for Breeding	5,803	5,788	0.3%
Market	59,197	58,862	0.6%
Market Hogs and Pigs			
by Weight Groups:			
Under 50 lbs	19,383	19,354	0.1%
50 - 119 lbs	16,861	16,902	-0.2%
120 - 179 lbs	12,424	12,029	3.3%
180 lbs and over	10,529	10,578	-0.5%

Source: USDA, National Agricultural Statistics Service

U.S. Hog Breeding Herd



Prepared by: Red Meat Section, Agriculture and Agri-Food Canada

Contact: Patti Negrave (613) 773-0226 or see us at: <http://www.agr.ca/redmeat>