



Hog Statistics at a Glance CANADA



For the Week Ending July 3, 2010

Federal Slaughter	weekly kill # head	CUMULATIVE TOTALS TO DATE		
		2010	2009	% chg
		'000 head		
West	129,891	4,104.0	3,910.0	5.0
Ontario	61,085	2,070.0	2,277.0	-9.1
Quebec-Atlantic	134,293	4,072.0	4,125.0	-1.3
CANADA	325,269	10,246.0	10,312.0	-0.6
Pork Production (t)	30,413	961,075	960,047	0.1
*Estimated Sow/Boar Slaughter	1,307	37,173	36,958	0.6

Weekly Prices \$/100kg (index 100)	2010			2009			% chg
	2010	2009	% chg	2010	2009	% chg	
Ontario*	152.81	118.14	29.3				
Quebec	156.21	121.67	28.4				
Alberta	147.35	122.50	20.3				
Manitoba*	149.00	130.75	14.0				
British Columbia	155.80	136.40	14.2				
Saskatchewan	145.30	122.20	18.9				
Nova Scotia	154.64	125.40	23.3				
Prince Ed. Is.	154.64	125.40	23.3				
New Brunswick	150.14	120.90	24.2				

*estimate

*includes federal & provincial slaughter

PORK EXPORTS YTD for the period of January 1 to April 30, 2010

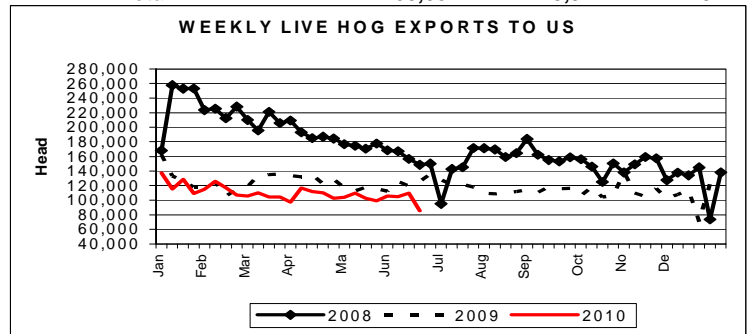
(Metric Tonnes)

FRESH, FROZEN AND PROCESSED PORK	2010	2009	% chg
United States	102,403	105,977	(3.4)
Japan	80,204	77,316	3.7
Australia	15,559	17,576	(11.5)
Russia	32,366	21,753	48.8
Mexico	17,938	13,056	37.4
South Korea	20,438	22,556	(9.4)
China	4,932	9,470	(47.9)
Taiwan	8,969	10,288	(12.8)
Cuba	1,888	2,600	(27.4)
New Zealand	2,106	4,203	(49.9)
Hong Kong	28,157	23,752	18.5
Philippines	18,977	15,150	25.3
Other	30,183	30,188	(0.0)
Total	364,120	353,885	2.9

Source: STATISTICS CANADA

LIVE HOG EXPORTS TO U.S.

Week Ending June 26, 2010	YTD 10	YTD 09	% chg
HOGS (head)			
Barrows/Gilts/Sows	511,435	559,721	-8.6
Feeder Pigs	2,230,012	2,563,155	-13.0
Total	2,741,447	3,122,876	-12.2
Barrows/Gilts/Sows	18,081	25,057	-27.8
Feeder Pigs	67,603	100,485	-32.7
Total	85,684	125,542	-31.7



Source: USDA-APHIS

IMPORTS YTD for the week ending June 26, 2010

(Metric Tonnes) preliminary	2010	2009	% chg
FRESH & FROZEN PORK			
United States	47,231	45,589	3.6
Denmark	-	3	
Other	2	1	

PORK PROCESSED	2010	2009	% chg
United States	20,725	17,061	21.5
Denmark	-	-	
Other	246	232	6.0
TOTAL IMPORTS	68,204	62,886	8.5

Frozen Pork from the European Union:

The TRQ level has established for frozen meat of pork originating from EU countries, for the twelve month period August 1, 2009 to July 31, 2010. Imports in excess of 2,970,000 kg in the twelve month period are subject to a surtax in an amount equal to the value for the duty (100%) determined in accordance with the Customs Act.

	Permits issued as of July 3, 2010		
	2009/2010	2008/2009	% chg
Utilization (kg)	2,969,761	2,961,414	0.3
Balance (kg)	239	8,586	-97.2
% Utilization	100.0%	99.7%	0.3



Hog Statistics at a Glance CANADA

Canadian Hog Slaughter by Province of Origin

Total Federal and Provincial Slaughter Year-to-Date July 3, 2010

Week ending July 3, 2010

	Total Federal and Provincial Slaughter Year-to-Date July 3, 2010			Week ending July 3, 2010		
	2010	2009	% chg	2010	2009	
British Columbia	104,048	102,066	1.9	3,482	3,984	-12.6
Alberta	1,267,226	1,285,771	-1.4	40,531	39,173	3.5
Saskatchewan	809,218	562,659	43.8	28,105	20,779	35.3
Manitoba	2,108,210	2,132,138	-1.1	64,950	68,513	-5.2
Ontario	2,358,274	2,579,675	-8.6	73,689	83,782	-12.0
Quebec	3,923,644	3,952,590	-0.7	127,938	120,047	6.6
New Brunswick	30,447	36,757	-17.2	1,107	1,237	-10.5
Nova Scotia	4,444	15,365	-71.1	229	487	-53.0
Prince Edward Island	47,785	41,885	14.1	1,543	1,332	15.8
CANADA	10,653,296	10,708,906	-0.5	341,574	339,334	0.7

NOTE: Please note that coverage for province of origin data in 2009 has been improved, therefore, previous year comparisons may be misleading.

UNITED STATES

Year To Date for the Week Ending July 3, 2010

Supply Summary

	2010	2009	% chg
Slaughter ('000 head)	54,013	56,152	-3.8
Slaughter for the week	1,972	1,889	4.4
Avg Dressed Wt (lbs)	204	199	2.5
Pork Produced (mil lbs)	10,994	11,431	-3.8

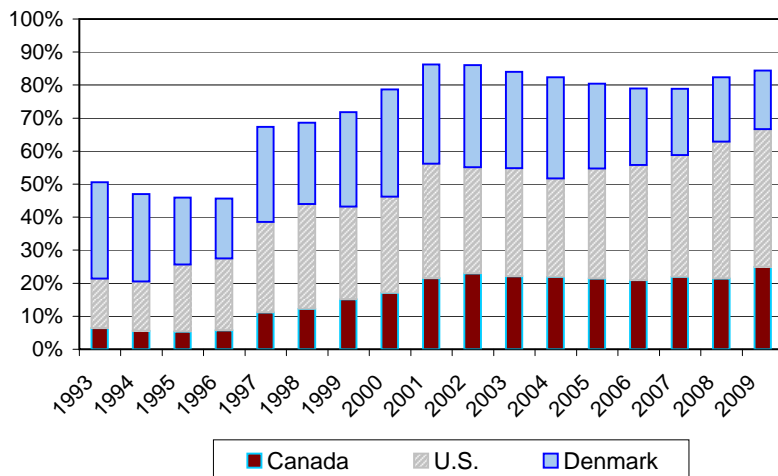
Source: USDA-APHIS

Weekly US Prices (\$/cwt)

	2010	2009	% chg
South St. Joseph	n/a	38.00	
Sioux Falls	n/a	41.00	
Oklahoma City	n/a	92.00	
National Cost	77.22	56.44	36.8

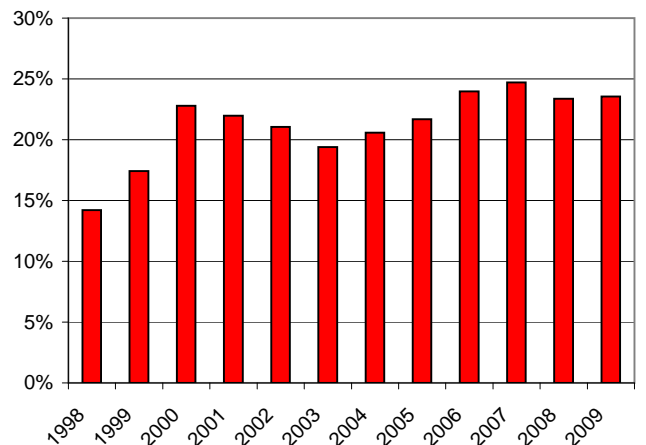
(51-54% Lean Yield Basis)

Share of Japanese Pork Imports by Country



Source: alic

Canadian Market Share of Japan's Fresh/Chilled Pork Imports



Prepared by: Red Meat Section, Agriculture and Agri-Food Canada

Contact: Patti Negrave (613) 773-0226 or see us at: <http://www.agr.ca/redmeat>