



Hog Statistics at a Glance CANADA



For the Week Ending July 31, 2010

Federal Slaughter	weekly kill # head	CUMULATIVE TOTALS TO DATE		
		2010	2009	% chg
		'000 head		
West	159,831	4,735.0	4,551.0	4.0
Ontario	75,204	2,361.0	2,626.0	-10.1
Quebec-Atlantic	142,240	4,643.0	4,766.0	-2.6
CANADA	377,275	11,739.0	11,943.0	-1.7
Pork Production (t)	35,275	1,101,118	1,111,893	-1.0
*Estimated Sow/Boar Slaughter	1,061	42,095	42,563	-1.1

Weekly Prices \$/100kg (index 100)	2010			% chg
	2010	2009	% chg	
Ontario*	153.28	114.65	33.7	
Quebec	153.76	118.43	29.8	
Alberta	152.60	115.80	31.8	
Manitoba*	152.00	120.84	25.8	
British Columbia	155.10	132.60	17.0	
Saskatchewan	145.50	111.30	30.7	
Nova Scotia	151.73	121.60	24.8	
Prince Ed. Is.	151.73	121.26	25.1	
New Brunswick	147.23	116.76	26.1	

*estimate

*includes federal & provincial slaughter

PORK EXPORTS YTD for the period of January 1 to May 31, 2010

(Metric Tonnes)

FRESH, FROZEN AND PROCESSED PORK	2010	2009	% chg
United States	128,686	131,344	(2.0)
Japan	103,478	96,941	6.7
Australia	18,694	21,764	(14.1)
Russia	42,935	27,972	53.5
Mexico	22,492	15,473	45.4
South Korea	24,800	28,346	(12.5)
China	7,533	11,116	(32.2)
Taiwan	10,504	11,757	(10.7)
Cuba	2,138	2,945	(27.4)
New Zealand	3,225	4,938	(34.7)
Hong Kong	34,248	28,639	19.6
Philippines	22,143	16,732	32.3
Other	35,336	36,905	(4.3)
Total	456,212	434,872	4.9

Source: STATISTICS CANADA

LIVE HOG EXPORTS TO U.S.

Week Ending July 3, 2010	YTD 10	YTD 09	% chg
HOGS (head)			
Barrows/Gilts/Sows	528,762	585,152	-9.6
Feeder Pigs	2,295,799	2,673,472	-14.1
Total	2,824,561	3,258,624	-13.3
Barrows/Gilts/Sows	17,327	25,431	-31.9
Feeder Pigs	65,787	110,317	-40.4
Total	83,114	135,748	-38.8

The U.S. report is not available for week ending July 24, 2010.

Source: USDA-APHIS

IMPORTS YTD for the week ending July 24, 2010

(Metric Tonnes) preliminary	2010	2009	% chg	PORK PROCESSED	2010	2009	% chg
FRESH & FROZEN PORK				PORK PROCESSED			
United States	54,994	52,532	4.7	United States	23,758	19,702	20.6
Denmark	-	3		Denmark	-	-	
Other	2	1		Other	311	328	-5.2
				TOTAL IMPORTS	79,065	72,566	9.0

Frozen Pork from the European Union:

The TRQ level has established for frozen meat of pork originating from EU countries, for the twelve month period August 1, 2009 to July 31, 2010. Imports in excess of 2,970,000 kg in the twelve month period are subject to a surtax in an amount equal to the value for the duty (100%) determined in accordance with the Customs Act.

	Permits issued as of July 31, 2010		
	2009/2010	2008/2009	% chg
Utilization (kg)	2,969,761	2,961,414	0.3
Balance (kg)	239	8,586	-97.2
% Utilization	100.0%	99.7%	0.3

Prepared by: Red Meat Section, Agriculture and Agri-Food Canada

Contact: Patti Negrave (613) 773-0226 or e-mail: patti.negrave@agr.gc.ca or see us at: <http://www.agr.ca/redmeat>



Hog Statistics at a Glance CANADA

Canadian Hog Slaughter by Province of Origin

Total Federal and Provincial Slaughter Year-to-Date July 31, 2010

Week ending July 31, 2010

	Total Federal and Provincial Slaughter Year-to-Date July 31, 2010			Week ending July 31, 2010		
	2010	2009	% chg	2010	2009	% chg
British Columbia	120,544	120,327	4551.0	4,074	4,764	-14.5
Alberta	1,417,434	1,502,423	2626.0	8,270	56,162	-85.3
Saskatchewan	926,707	655,560	4766.0	24,974	20,133	24.0
Manitoba	2,432,812	2,473,523	-1.6	79,673	86,427	-7.8
Ontario	2,698,808	2,983,727	-9.5	87,440	103,982	-15.9
Quebec	4,464,643	4,565,292	-2.2	136,138	152,632	-10.8
New Brunswick	36,090	43,101	-16.3	1,101	1,092	0.8
Nova Scotia	5,238	17,298	-69.7	184	396	-53.5
Prince Edward Island	54,070	47,956	12.7	1,667	1,625	2.6
CANADA	12,156,346	12,409,207	-2.0	343,521	427,213	-19.6

NOTE: Please note that coverage for province of origin data in 2009 has been improved, therefore, previous year comparisons may be misleading.

UNITED STATES

Year To Date for the Week Ending July 31, 2010

Supply Summary

	2010	2009	% chg
Slaughter ('000 head)	61,624	64,195	-4.0
Slaughter for the week	1,949	2,103	-7.3
Avg Dressed Wt (lbs)	202	201	0.5
Pork Produced (mil lbs)	12,520	13,042	-4.0

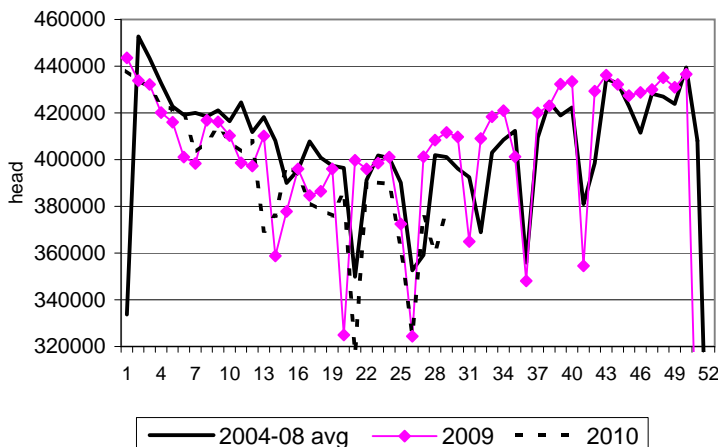
Source: USDA-APHIS

Weekly US Prices (\$/cwt)

	2010	2009	% chg
South St. Joseph	n/a	n/a	
Sioux Falls	n/a	35.00	
Oklahoma City	52.00	30.00	73.3
National Cost	80.83	54.57	48.1

(51-54% Lean Yield Basis)

Canadian Weekly Federally Inspected Hog Slaughter



US Weekly Hog Slaughter

