



# Hog Statistics at a Glance CANADA



For the Week Ending June 3, 2006

## Federal Slaughter

	weekly kill # head	CUMULATIVE TOTALS TO DATE		
		2006 '000 head	2005 '000 head	% chg
West	172,601	3,680.0	3,746.0	-1.8
Ontario	78,101	1,700.0	1,779.0	-4.4
Quebec	147,297	3,323.0	3,526.0	-5.8
Atlantic	7,595	174.0	189.0	-7.9
<b>CANADA</b>	<b>405,594</b>	<b>8,877.0</b>	<b>9,240.0</b>	<b>-3.9</b>
<b>Pork Production (t)</b>	<b>35,489</b>	<b>776,738</b>	<b>805,728</b>	<b>-3.6</b>
<b>Estimated Sow Slaughter</b>	<b>3,142</b>	<b>60,871</b>	<b>51,587</b>	<b>18.0</b>

## Weekly Prices \$/kg (index 100)

	2006	2005	% chg
Ontario*	134.45	159.92	-15.9
Quebec	127.88	157.41	-18.8
Alberta	124.70	147.70	-15.6
Manitoba*	136.00	159.00	-14.5
British Columbia	151.80	170.11	-10.8
Saskatchewan	127.90	138.70	-7.8
Nova Scotia	141.01	173.61	-18.8
Prince Ed. Is.	131.39	163.69	-19.7
New Brunswick	136.51	169.11	-19.3

\*estimate

## PORK EXPORTS

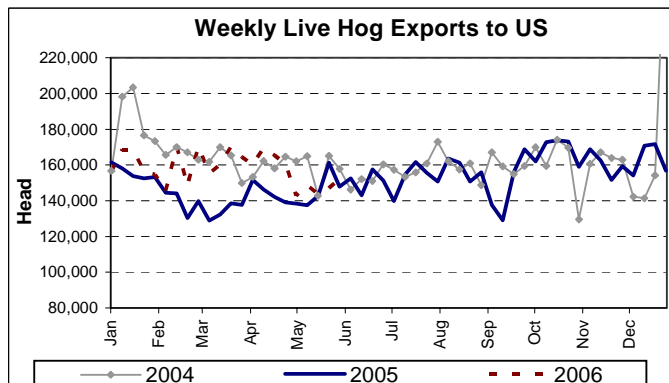
YTD for the period of January - March

(Metric Tonnes)	2006	2005	% chg
<b>FRESH, FROZEN AND PROCESSED PORK</b>			
United States	93,157	91,717	1.6
Japan	60,782	71,747	(15.3)
Australia	11,912	13,198	(9.7)
Russia	19,447	6,401	203.8
Mexico	13,072	15,942	(18.0)
South Korea	14,977	16,568	(9.6)
China	12,501	10,170	22.9
Taiwan	4,708	5,501	(14.4)
Cuba	2,383	368	547.6
New Zealand	1,600	1,350	18.5
Other	27,979	24,728	13.1
<b>Total</b>	<b>262,518</b>	<b>257,690</b>	<b>1.9</b>

Source: STATISTICS CANADA

## LIVE HOG EXPORTS TO U.S.

	YTD 06	YTD 05	% chg
<b>HOGS (head)</b>			
Barrows/Gilts/Sows	1,044,524	1,027,267	1.7
Feeder Pigs	2,436,253	2,155,710	13.0
<b>Total</b>	<b>3,480,777</b>	<b>3,182,977</b>	<b>9.4</b>
<b>Week Ending 06-06-03</b>			
Barrows/Gilts/Sows	43,819	45,227	-3.1
Feeder Pigs	108,470	102,700	5.6
<b>Total</b>	<b>152,289</b>	<b>147,927</b>	<b>2.9</b>



Source: USDA-APHIS

## IMPORTS

YTD for the week ending 06-05-27

(Metric Tonnes) preliminary	2006	2005	% chg
<b>FRESH &amp; FROZEN PORK</b>			
United States	35,647	33,381	6.8
Denmark (REVISIONS)	-	243	
Other	1	27	-96.3

## PROCESSED & OTHER PORK

	2006	2005	% chg
United States	7,448	6,564	13.5
Denmark	-	-	
Other	160	61	162.3
<b>TOTAL IMPORTS</b>	<b>43,256</b>	<b>40,276</b>	<b>7.4</b>

## Frozen Pork from the European Union:

The TRQ level has established for frozen meat of pork originating from EU countries, for the twelve month period August 1 to July 31, 2006. Imports in excess of 2,970,000 kg in the twelve month period are subject to a surtax in an amount equal to the value for the duty (100%) determined in accordance with the Customs Act.

	Permits issued as of June 3, 2006		
	2005/2006	2004/2005	% chg
Utilization (kg)	2,969,900	2,969,899	0.0
Balance (kg)	100	101	-1.0
% Utilization	100.0%	100.0%	0.0

Prepared by: Red Meat Section, Agriculture and Agri-Food Canada

Contact: Patti Negrave (613) 759-6216 or see us at: <http://www.agr.ca/redmeat>



# Hog Statistics at a Glance CANADA

## Canadian Hog Slaughter by Province of Origin

Total Slaughter Year to Date June 3, 2006

Week ending June 3, 2006

	2006	2005	% chg	2006	2005	% chg
British Columbia	87,477	97,506	-10.3	4,362	4,303	1.4
Alberta	1,664,280	1,477,601	12.6	78,294	69,288	13.0
Saskatchewan	459,108	565,757	-18.9	20,794	23,610	-11.9
Manitoba	1,642,429	1,777,521	-7.6	76,450	79,186	-3.5
Ontario	2,174,430	2,255,899	-3.6	97,182	100,002	-2.8
Quebec	3,036,370	3,213,308	-5.5	135,332	143,072	-5.4
New Brunswick	55,515	67,347	-17.6	2,759	3,604	-23.4
Nova Scotia	79,130	74,879	5.7	2,881	3,441	-16.3
Prince Edward Island	83,989	91,619	-8.3	3,993	3,986	0.2
<b>CANADA</b>	<b>9,282,728</b>	<b>9,621,437</b>	<b>-3.5</b>	<b>422,047</b>	<b>430,492</b>	<b>-2.0</b>

## UNITED STATES

Year To Date for the Week Ending June 3, 2006

### Supply Summary

	2006	2005	% chg
Slaughter ('000 head)	42,999	42,851	0.3
Slaughter for the week	1,668	1,653	0.9
Avg Dressed Wt (lbs)	203	202	0.5
Pork Produced (mil lbs)	8,766	8,632	1.5

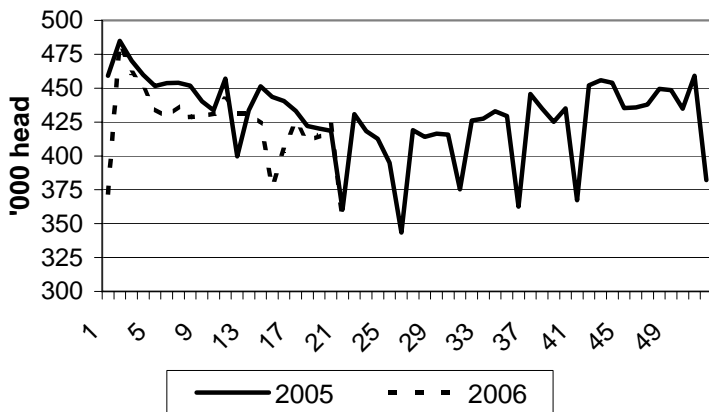
Source: USDA-APHIS

### Weekly US Prices (\$/cwt)

	2006	2005	% chg
South St. Joseph	52.25	46.25	13.0
Sioux Falls	53.00	48.25	9.8
Oklahoma City	44.00	45.50	-3.3
National Cost	64.83	66.79	-2.9

(51-54% Lean Yield Basis)

Canadian Weekly Hog Slaughter



US Weekly Hog Slaughter

