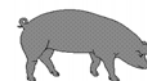


Hog Statistics at a Glance CANADA



For the Week Ending June 4, 2011

Federal Slaughter	CUMULATIVE TOTALS TO DATE			
	weekly kill # head	2011 '000 head	2010 '000 head	% chg
West	156,164	3,443.0	3,497.0	-1.5
Ontario	74,943	1,720.0	1,781.0	-3.4
Quebec-Atlantic	155,573	3,395.0	3,501.0	-3.0
CANADA	386,680	8,558.0	8,779.0	-2.5
Pork Production (t)	36,155	804,452	825,226	-2.5
*Estimated Sow/Boar Slaughter	1,749	36,752	32,787	12.1

Weekly Prices \$/100kg (index 100)	2011			2010		
	2011	2010	% chg	2011	2010	% chg
Ontario**	188.19	155.82	20.8			
Quebec	168.50	157.78	6.8			
Alberta	159.40	145.50	9.6			
Manitoba*	160.00	149.28	7.2			
British Columbia	171.90	164.10	4.8			
Saskatchewan	158.08	147.92	6.9			
Nova Scotia	171.89	163.96	4.8			
Prince Ed. Is.	171.89	163.96	4.8			
New Brunswick	167.39	159.46	5.0			

*Estimated Sow/Boar Slaughter
*includes federal & provincial slaughter

*Estimate
** As of December 4, 2010 the Ontario hog price changed from an Index 100 price to a Dressed Weight (Total Value FOB yard) price.

PORK EXPORTS

YTD for the period of January 1 to March 31, 2011

(Metric Tonnes)

FRESH, FROZEN AND PROCESSED PORK

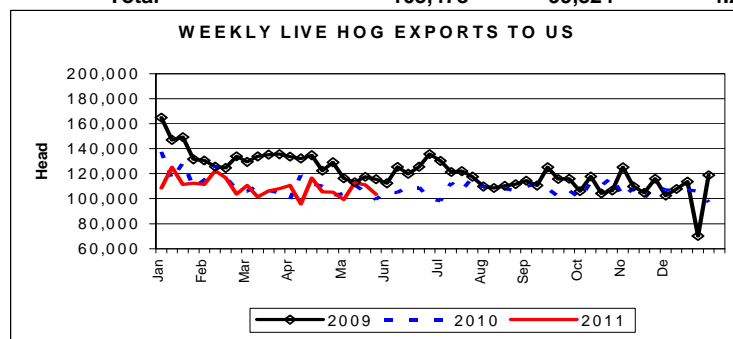
	2011	2010	% chg
United States	76,134	77,675	(2.0)
Japan	59,485	62,001	(4.1)
Australia	7,917	12,317	(35.7)
Russia	26,536	23,933	10.9
Mexico	13,991	13,436	4.1
South Korea	34,073	15,366	121.7
China	17,875	2,345	662.3
Taiwan	9,205	7,565	21.7
Cuba	697	1,368	(49.0)
New Zealand	2,317	1,666	39.1
Hong Kong	5,323	22,467	(76.3)
Philippines	9,045	15,601	(42.0)
Other	16,566	23,978	(30.9)
Total	279,164	279,718	(0.2)

Source: STATISTICS CANADA

Source: USDA-APHIS

LIVE HOG EXPORTS TO U.S.

Year-to-Date May 28, 2011	2011	2010	% chg
HOGS (head)			
Barrows/Gilts/Sows	406,660	438,586	-7.3
Feeder Pigs	1,892,305	1,906,973	-0.8
Total	2,298,965	2,345,559	-2.0
Week Ending May 28, 2011			
Barrows/Gilts/Sows	18,713	18,996	-1.5
Feeder Pigs	84,765	80,328	5.5
Total	103,478	99,324	4.2



IMPORTS

YTD for the week ending May 28, 2011

(Metric Tonnes) preliminary

FRESH & FROZEN PORK

	2011	2010	% chg
United States	43,517	40,192	8.3
Denmark	26	-	-
Other	1	2	-50.0

PORK PROCESSED	2011	2010	% chg
United States	19,564	18,103	8.1
Denmark	-	-	-
Other	250	206	21.4
TOTAL IMPORTS	63,358	58,503	8.3

Frozen Pork from the European Union:

The TRQ level has established for frozen meat of pork originating from EU countries, for the twelve month period August 1, 2010 to July 31, 2011. Imports in excess of 2,970,000 kg in the twelve month period are subject to a surtax in an amount equal to the value for the duty (100%) determined in accordance with the Customs Act.

	Permits issued as of June 4, 2011		
	2010/2011	2009/2010	% chg
Utilization (kg)	2,963,386	2,949,330	0.5
Balance (kg)	6,614	20,670	-68.0
% Utilization	99.8%	99.3%	0.5

Prepared by: Red Meat Section, Agriculture and Agri-Food Canada

Contact: Patti Negrave (613) 773-0226 or e-mail: patti.negrave@agr.gc.ca or see us at: <http://www.agr.ca/redmeat>



Hog Statistics at a Glance CANADA

Canadian Hog Slaughter by Province of Origin

Total Federal and Provincial Slaughter Year-to-Date June 4, 2011

Week ending June 4, 2011

	Total Federal and Provincial Slaughter Year-to-Date June 4, 2011			Week ending June 4, 2011		
	2011	2010	% chg	2011	2010	% chg
British Columbia	67,131	88,975	-24.6	3,365	3,731	-9.8
Alberta	1,018,102	1,082,009	-5.9	46,043	50,132	-8.2
Saskatchewan	731,985	686,480	6.6	33,019	33,060	-0.1
Manitoba	1,784,334	1,794,813	-0.6	81,014	76,551	5.8
Ontario	2,037,941	2,018,983	0.9	89,984	87,676	2.6
Quebec	3,187,856	3,380,721	-5.7	146,535	149,944	-2.3
New Brunswick	20,754	25,463	-18.5	706	1,829	-61.4
Nova Scotia	3,542	3,563	-0.6	135	260	-48.1
Prince Edward Island	40,627	40,673	-0.1	1,961	1,266	54.9
CANADA	8,892,272	9,121,680	-2.5	402,762	404,449	-0.4

UNITED STATES

Year To Date for the Week Ending June 4, 2011

Supply Summary

	2011	2010	% chg
Slaughter ('000 head)	45,608	46,052	-1.0
Slaughter for the week	1,746	1,789	-2.4
Avg Dressed Wt (lbs)	207	204	1.5
Pork Produced (mil lbs)	9,482	9,374	1.2

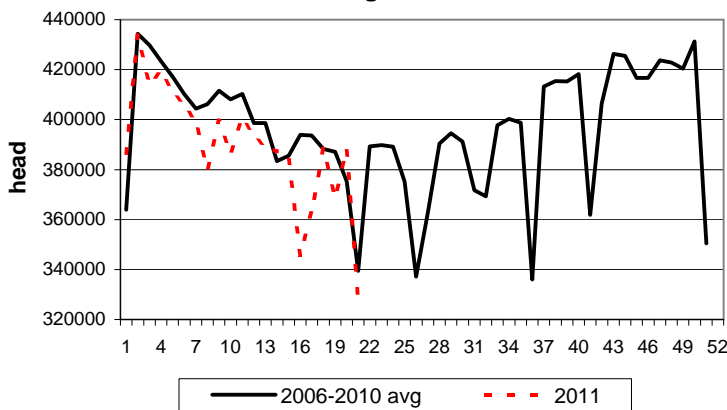
Source: USDA-APHIS

Weekly US Prices (\$/cwt)

(weighted weekly average carcass)

	2011	2010	% chg
Iowa/Minnesota	87.31	76.88	13.6
Western Cornbelt	87.53	76.87	13.9
Eastern Cornbelt	87.85	76.06	15.5
National	88.30	76.68	15.2

Canadian Weekly Federally Inspected Hog Slaughter



US Weekly Hog Slaughter

