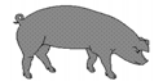




Hog Statistics at a Glance CANADA



For the Week Ending June 5, 2010

Federal Slaughter	weekly kill # head	CUMULATIVE TOTALS TO DATE		
		2010	2009	% chg
		'000 head		
West	156,306	3,497.0	3,312.0	5.6
Ontario	77,723	1,781.0	1,948.0	-8.6
Quebec-Atlantic	155,430	3,501.0	3,554.0	-1.5
CANADA	389,459	8,779.0	8,814.0	-0.4
Pork Production (t)	36,414	823,470	820,583	0.4
*Estimated Sow/Boar Slaughter	1,443	31,913	31,180	2.4

Weekly Prices \$/100kg (index 100)	2010			2009			% chg
	2010	2009	% chg	2010	2009	% chg	
Ontario*	155.40	117.41	32.4				
Quebec	138.00	124.25	11.1				
Alberta	145.50	119.10	22.2				
Manitoba*	147.00	125.32	17.3				
British Columbia	164.10	137.80	19.1				
Saskatchewan	147.92	116.30	27.2				
Nova Scotia	163.96	123.54	32.7				
Prince Ed. Is.	163.96	123.54	32.7				
New Brunswick	159.46	119.04	34.0				

*estimate

*includes federal & provincial slaughter

PORK EXPORTS YTD for the period of January 1 to April 30, 2010

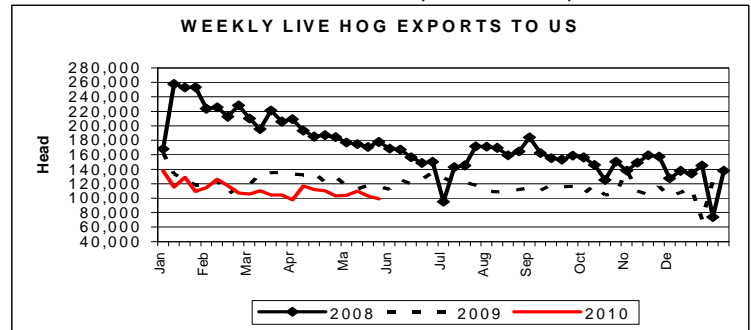
(Metric Tonnes)

FRESH, FROZEN AND PROCESSED PORK	2010	2009	% chg
United States	102,403	105,977	(3.4)
Japan	80,204	77,316	3.7
Australia	15,559	17,576	(11.5)
Russia	32,366	21,753	48.8
Mexico	17,938	13,056	37.4
South Korea	20,438	22,556	(9.4)
China	4,932	9,470	(47.9)
Taiwan	8,969	10,288	(12.8)
Cuba	1,888	2,600	(27.4)
New Zealand	2,106	4,203	(49.9)
Hong Kong	28,157	23,752	18.5
Philippines	18,977	15,150	25.3
Other	30,183	30,188	(0.0)
Total	364,120	353,885	2.9

Source: STATISTICS CANADA

LIVE HOG EXPORTS TO U.S.

Week Ending May 29, 2010	YTD 10	YTD 09	% chg
HOGS (head)			
Barrows/Gilts/Sows	438,586	461,405	-4.9
Feeder Pigs	1,897,189	2,178,359	-12.9
Total	2,335,775	2,639,764	-11.5
Barrows/Gilts/Sows	18,996	19,380	-2.0
Feeder Pigs	80,208	96,189	-16.6
Total	99,204	115,569	-14.2



Source: USDA-APHIS

IMPORTS YTD for the week ending May 29, 2010

(Metric Tonnes) preliminary	2010	2009	% chg
FRESH & FROZEN PORK			
United States	39,849	37,342	6.7
Denmark	-	3	
Other	2	1	

PORK PROCESSED	2010	2009	% chg
United States	18,051	13,855	30.3
Denmark	-	-	
Other	206	175	17.7
TOTAL IMPORTS	58,108	51,376	13.1

Frozen Pork from the European Union:

The TRQ level has established for frozen meat of pork originating from EU countries, for the twelve month period August 1, 2009 to July 31, 2010. Imports in excess of 2,970,000 kg in the twelve month period are subject to a surtax in an amount equal to the value for the duty (100%) determined in accordance with the Customs Act.

	Permits issued as of June 5, 2010		
	2009/2010	2008/2009	% chg
Utilization (kg)	2,969,761	2,961,414	0.3
Balance (kg)	239	8,586	-97.2
% Utilization	100.0%	99.7%	0.3



Hog Statistics at a Glance CANADA

Canadian Hog Slaughter by Province of Origin

Total Federal and Provincial Slaughter Year-to-Date June 5, 2010

Week ending June 5, 2010

	Total Federal and Provincial Slaughter Year-to-Date June 5, 2010			Week ending June 5, 2010		
	2010	2009	% chg	2010	2009	% chg
British Columbia	88,875	85,634	3.8	3,647	3,738	-2.4
Alberta	1,039,864	1,099,674	-5.4	8,863	48,034	-81.5
Saskatchewan	676,236	464,243	45.7	22,925	25,356	-9.6
Manitoba	1,794,494	1,809,689	-0.8	76,232	86,241	-11.6
Ontario	2,018,231	2,202,772	-8.4	88,181	101,226	-12.9
Quebec	3,378,683	3,409,727	-0.9	150,529	143,928	4.6
New Brunswick	25,463	31,310	-18.7	1,829	1,491	22.7
Nova Scotia	4,144	13,256	-68.7	321	482	-33.4
Prince Edward Island	40,651	35,643	14.1	1,262	757	66.7
CANADA	9,066,641	9,151,948	-0.9	353,789	411,253	-14.0

NOTE: Please note that coverage for province of origin data in 2009 has been improved, therefore, previous year comparisons may be misleading.

UNITED STATES

Year To Date for the Week Ending June 5, 2010

Supply Summary

	2010	2009	% chg
Slaughter ('000 head)	46,037	48,082	-4.3
Slaughter for the week	1,791	2,093	-14.4
Avg Dressed Wt (lbs)	204	203	0.5
Pork Produced (mil lbs)	9,373	9,809	-4.4

Source: USDA-APHIS

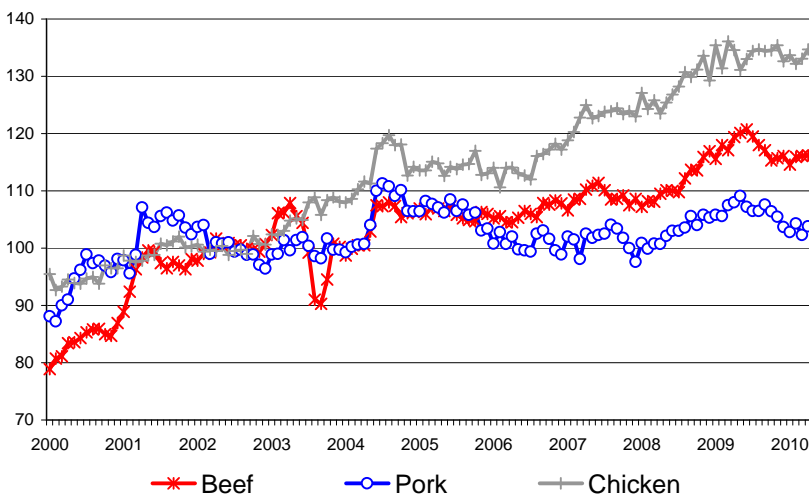
Weekly US Prices (\$/cwt)

	2010	2009	% chg
South St. Joseph	54.75	37.50	46.0
Sioux Falls	n/a	37.00	
Oklahoma City	50.00	30.00	66.7
National Cost	76.18	56.28	35.4

(51-54% Lean Yield Basis)

Price Appreciation of Canadian Meat Proteins

Consumer Price Index, Jan 2002 = 100



Canadian Per Capita Meat Consumption

