



# Hog Statistics at a Glance CANADA



For the Week Ending May 31, 2008

## Federal Slaughter

	weekly kill # head	CUMULATIVE TOTALS TO DATE		
		2008	2007	% chg
		'000 head		
West	145,106	3,228.0	3,426.0	-5.8
Ontario	84,339	1,978.0	1,813.0	9.1
Quebec	150,734	3,347.0	3,247.0	3.1
Atlantic	2,254	103.0	154.0	-33.1
<b>CANADA</b>	<b>382,433</b>	<b>8,656.0</b>	<b>8,640.0</b>	<b>0.2</b>
<b>Pork Production (t)</b>	<b>33,463</b>	<b>761,728</b>	<b>756,000</b>	<b>0.8</b>
<b>*Est Sow/Boar Slaughter</b>	<b>2,007</b>	<b>39,215</b>	<b>48,321</b>	<b>-18.8</b>

\*revised includes fed & prov

## Weekly Prices \$/100kg (index 100)

	2008	2007	% chg
Ontario*	141.19	147.13	-4.0
Quebec	145.29	147.16	-1.3
Alberta	136.50	140.10	-2.6
Manitoba*	139.00	151.00	-7.9
British Columbia	153.10	156.60	-2.2
Saskatchewan	136.50	141.40	-3.5
Nova Scotia	150.66	150.47	0.1
Prince Ed. Is.	150.66	145.81	3.3
New Brunswick	146.16	145.97	0.1

\*estimate

## PORK EXPORTS

YTD for the period of January 1 - March 31

(Metric Tonnes)

### FRESH, FROZEN AND PROCESSED PORK

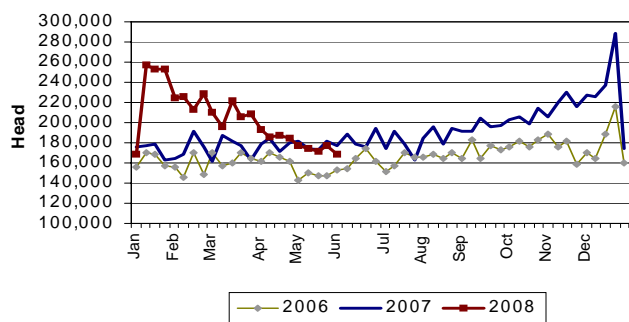
	2008	2007	% chg
United States	77,514	88,402	(12.3)
Japan	57,030	62,446	(8.7)
Australia	7,910	11,828	(33.1)
Russia	27,052	22,682	19.3
Mexico	10,004	12,796	(21.8)
South Korea	17,900	16,929	5.7
China	7,591	10,555	(28.1)
Taiwan	3,878	3,152	23.0
Cuba	1,595	1,751	(8.9)
New Zealand	1,340	2,260	(40.7)
Other	49,023	23,539	108.3
<b>Total</b>	<b>260,837</b>	<b>256,340</b>	<b>1.8</b>

Source: STATISTICS CANADA

## LIVE HOG EXPORTS TO U.S.

	YTD 08	YTD 07	% chg
<b>HOGS (head)</b>			
Barrows/Gilts/Sows	1,264,641	1,190,318	6.2
Feeder Pigs	3,216,236	2,675,123	20.2
<b>Total</b>	<b>4,480,877</b>	<b>3,865,441</b>	<b>15.9</b>
<b>Week Ending 08-05-31</b>			
Barrows/Gilts/Sows	36,796	54,644	-32.7
Feeder Pigs	131,650	122,647	7.3
<b>Total</b>	<b>168,446</b>	<b>177,291</b>	<b>-5.0</b>

### WEEKLY LIVE HOG EXPORTS TO US



Source: USDA-APHIS

## IMPORTS

YTD for the week ending May 24, 2008

(Metric Tonnes) preliminary

### FRESH & FROZEN PORK

	2008	2007	% chg
United States	38,107	34,014	12.0
Denmark	339	571	-40.6
Other	3	1	200.0

	2008	2007	% chg
<b>Pork Processed</b>			
United States	8,005	9,064	-11.7
Denmark	-	-	
Other	193	100	93.0
<b>TOTAL IMPORTS</b>	<b>46,647</b>	<b>43,750</b>	<b>6.6</b>

### Frozen Pork from the European Union:

The TRQ level has established for frozen meat of pork originating from EU countries, for the twelve month period August 1 to July 31, 2008. Imports in excess of 2,970,000 kg in the twelve month period are subject to a surtax in an amount equal to the value for the duty (100%) determined in accordance with the Customs Act.

	Permits issued as of May 31, 2008		
	2007/2008	2006/2007	% chg
Utilization (kg)	2,969,997	2,970,000	0.0
Balance (kg)	3	-	
% Utilization	100.0%	100.0%	(0.0)

Prepared by: Red Meat Section, Agriculture and Agri-Food Canada

Contact: Patti Negrave (613) 773-0226 or see us at: <http://www.agr.ca/redmeat>