



Hog Statistics at a Glance CANADA



For the Week Ending November 7, 2009

Federal Slaughter	weekly kill # head	CUMULATIVE TOTALS TO DATE		
		2009	2008	% chg
		'000 head		
West	171,292	6,798.0	6,371.0	6.7
Ontario	93,442	3,880.0	3,907.0	-0.7
Quebec-Atlantic	167,421	6,985.0	6,875.0	1.6
CANADA	432,155	17,663.0	17,153.0	3.0
Pork Production (t)	40,406	1,656,789	1,596,944	3.7
*Est Sow/Boar Slaughter	1,487	58,782	69,605	-15.5

Weekly Prices \$/100kg (index 100)	2009			2008			% chg
	2009	2008	% chg	2009	2008	% chg	
Ontario*	104.53	135.33	-22.8				
Quebec	106.90	136.38	-21.6				
Alberta	106.80	140.70	-24.1				
Manitoba*	107.00	133.24	-19.7				
British Columbia	119.80	152.70	-21.5				
Saskatchewan	101.20	132.00	-23.3				
Nova Scotia	106.48	138.93	-23.4				
Prince Ed. Is.	106.48	138.93	-23.4				
New Brunswick	101.98	134.43	-24.1				

*estimate

*includes federal & provincial slaughter

PORK EXPORTS YTD for the period of January 1 to September 30, 2009

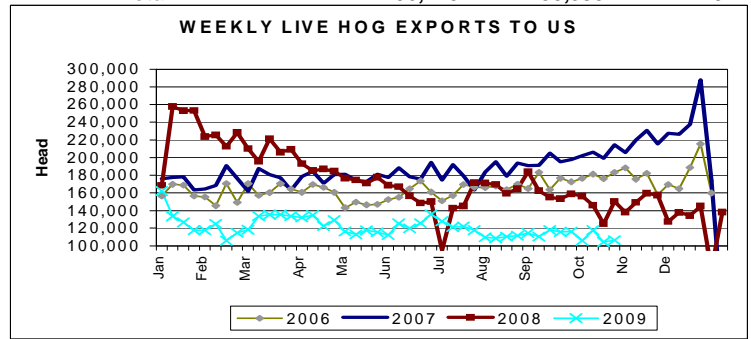
(Metric Tonnes)

FRESH, FROZEN AND PROCESSED PORK	2009	2008	% chg
United States	240,083	221,085	8.6
Japan	166,736	173,684	(4.0)
Australia	39,562	26,141	51.3
Russia	47,398	90,874	(47.8)
Mexico	30,013	31,919	(6.0)
South Korea	47,701	49,981	(4.6)
China	22,463	28,900	(22.3)
Taiwan	27,524	20,525	34.1
Cuba	3,871	3,774	2.6
New Zealand	9,188	6,361	44.4
Hong Kong	51,703	72,607	(28.8)
Philippines	31,840	28,636	11.2
Other	67,642	63,896	5.9
Total	785,724	818,383	(4.0)
Total (Jan 1 to Dec 31, 2008)		1,094,499	

Source: STATISTICS CANADA

LIVE HOG EXPORTS TO U.S.

	YTD 09	YTD 08	% chg
HOGS (head)			
Barrows/Gilts/Sows	978,322	1,996,137	-51.0
Feeder Pigs	4,219,051	5,716,755	-26.2
Total	5,197,373	7,712,892	-32.6
Week Ending October 31, 2009			
Barrows/Gilts/Sows	20,775	28,956	-28.3
Feeder Pigs	85,665	121,437	-29.5
Total	106,440	150,393	-29.2



Source: USDA-APHIS

IMPORTS YTD for the week ending October 31, 2009

(Metric Tonnes) preliminary	2009	2008	% chg
FRESH & FROZEN PORK			
United States	79,194	81,361	-2.7
Denmark	3	504	-99.4
Other	2	3	-33.3

PORK PROCESSED	2009	2008	% chg
United States	30,945	27,971	10.6
Denmark	-	-	
Other	449	527	-14.8
TOTAL IMPORTS	110,593	110,366	0.2

Frozen Pork from the European Union:

The TRQ level has established for frozen meat of pork originating from EU countries, for the twelve month period August 1, 2009 to July 31, 2010. Imports in excess of 2,970,000 kg in the twelve month period are subject to a surtax in an amount equal to the value for the duty (100%) determined in accordance with the Customs Act.

	Permits issued as of November 7, 2009		
	2009/2010	2008/2009	% chg
Utilization (kg)	2,949,330	2,961,414	-0.4
Balance (kg)	20,670	8,586	140.7
% Utilization	99.3%	99.7%	(0.4)



Hog Statistics at a Glance CANADA

Canadian Hog Slaughter by Province of Origin

Total Slaughter Year to Date November 7, 2009

Week ending November 7, 2009

	2009	2008	% chg	2009	2008	% chg
British Columbia	184,247	204,997	-10.1	4,130	4,327	-4.6
Alberta	2,219,949	2,541,081	-12.6	64,046	58,534	9.4
Saskatchewan	1,023,894	761,971	34.4	21,772	19,030	14.4
Manitoba	3,673,081	3,180,113	15.5	88,387	86,935	1.7
Ontario	4,453,395	4,474,870	-0.5	106,738	110,659	-3.5
Quebec	6,649,668	6,479,224	2.6	159,371	164,851	-3.3
New Brunswick	62,920	67,974	-7.4	2,187	1,435	52.4
Nova Scotia	20,229	52,294	-61.3	187	837	-77.7
Prince Edward Island	69,749	117,550	-40.7	1,676	1,807	-7.2
CANADA	18,357,132	17,880,074	2.7	448,494	448,415	0.0

UNITED STATES

Year To Date for the Week Ending November 7, 2009

Supply Summary

	2009	2008	% chg
Slaughter ('000 head)	95,784	98,636	-2.9
Slaughter for the week	2,302	2,305	-0.1
Avg Dressed Wt (lbs)	203	202	0.5
Pork Produced (mil lbs)	19,410	19,767	-1.8

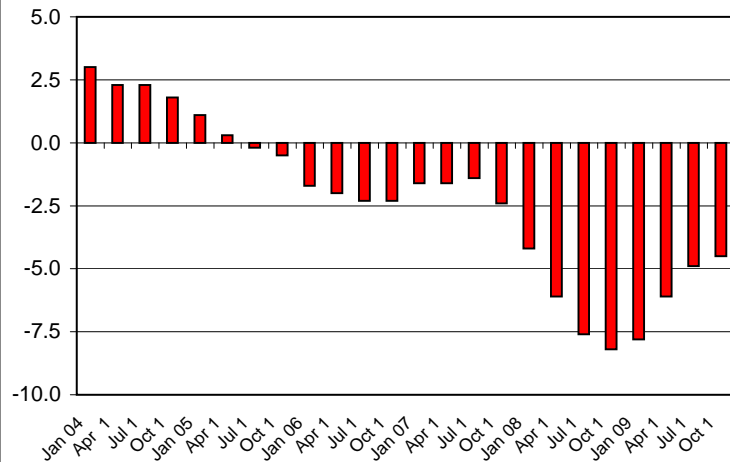
Source: USDA-APHIS

Weekly US Prices (\$/cwt)

	2009	2008	% chg
South St. Joseph	35.25	35.75	-1.4
Sioux Falls	38.50	n/a	
Oklahoma City	34.00	32.00	6.3
National Cost	53.05	55.02	-3.6

(51-54% Lean Yield Basis)

Year-over-Year Change in the Canadian Swine Breeding Herd (2004 - 2009)



Year over Year Change in the Swine Breeding Herd in the United States (2004-2009)

