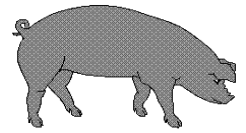




Hog Statistics at a Glance CANADA



For the Week Ending November 8, 2008

Federal Slaughter	weekly kill # head	CUMULATIVE TOTALS TO DATE		
		2008	2007	% chg
		'000 head		
West	162,111	6,533.0	6,806.0	-4.0
Ontario	93,899	3,991.0	3,748.0	6.5
Quebec	165,564	6,886.0	6,657.0	3.4
Atlantic	2,335	157.0	298.0	-47.3
CANADA	423,909	17,567.0	17,509.0	0.3
Pork Production (t)	37,092	1,545,896	1,532,038	0.9
*Est Sow/Boar Slaughter	1,994	80,627	86,692	-7.0
Cull Swine Breeding Program April 14 - YTD		39,263	-	
TOTAL SOWS/BOARS		119,890	86,692	38.3

*includes federal & provincial slaughter

Weekly Prices \$/100kg (index 100)	2008			2007			% chg
	2008	2007	% chg	2008	2007	% chg	
Ontario*	104.16	88.92	17.1				
Quebec	121.34	81.34	49.2				
Alberta	125.40	90.70	38.3				
Manitoba*	116.00	87.00	33.3				
British Columbia	152.20	112.40	35.4				
Saskatchewan	115.00	82.40	39.6				
Nova Scotia	133.12	93.88	41.8				
Prince Ed. Is.	133.12	95.45	39.5				
New Brunswick	128.62	89.38	43.9				

*estimate

PORK EXPORTS

YTD for the period of January 1 - August 31

(Metric Tonnes)

FRESH, FROZEN AND PROCESSED PORK	2008	2007	% chg
United States	197,542	241,423	(18.2)
Japan	153,584	153,712	(0.1)
Australia	22,936	26,747	(14.2)
Russia	71,852	49,286	45.8
Mexico	28,178	34,877	(19.2)
South Korea	43,981	41,816	5.2
China	27,302	33,578	(18.7)
Taiwan	18,617	8,200	127.0
Cuba	3,352	2,970	12.9
New Zealand	5,502	7,509	(26.7)
Hong Kong	66,664	7,749	760.3
Philippines	27,145	17,578	54.4
Other	57,245	38,572	48.4
Total	723,900	664,017	9.0

Source: STATISTICS CANADA

LIVE HOG EXPORTS TO U.S.

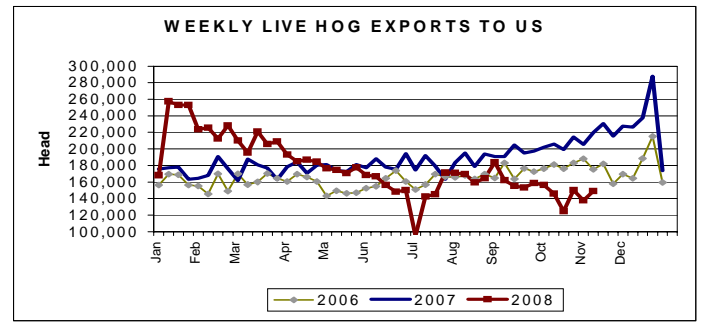
YTD 08 YTD 07 % chg

HOGS (head)

Barrows/Gilts/Sows	2,060,461	2,714,518	-24.1
Feeder Pigs	5,939,545	5,574,706	6.5
Total	8,000,006	8,289,224	-3.5

Week Ending 08-11-08

Barrows/Gilts/Sows	32,668	83,845	-61.0
Feeder Pigs	116,424	135,908	-14.3
Total	149,092	219,753	-32.2



Source: USDA-APHIS

IMPORTS

YTD for the week ending November 1, 2008

(Metric Tonnes) preliminary	2008	2007	% chg
FRESH & FROZEN PORK			
United States	83,162	79,208	5.0
Denmark	504	1,301	-61.3
Other	10	101	-90.1

Pork Processed	2008	2007	% chg
United States	16,723	18,153	-7.9
Denmark	-	-	
Other	463	288	60.8
TOTAL IMPORTS	100,862	99,051	1.8

Frozen Pork from the European Union:

The TRQ level has established for frozen meat of pork originating from EU countries, for the twelve month period August 1, 2008 to July 31, 2009. Imports in excess of 2,970,000 kg in the twelve month period are subject to a surtax in an amount equal to the value for the duty (100%) determined in accordance with the Customs Act.

	Permits issued as of November 1, 2008		
	2008/2009	2007/2008	% chg
Utilization (kg)	2,963,633	2,969,997	-0.2
Balance (kg)	6,367	3	
% Utilization	99.8%	100.0%	(0.2)



Hog Statistics at a Glance CANADA

For the Week Ending November 8, 2008

Total Slaughter Year to Date November 8, 2008

Week ending October 25, 2008

	2008	2007	% chg	2008	2007	% chg
British Columbia	209,719	203,440	3.1	4,722	4,944	-4.5
Alberta	2,618,413	2,906,970	-9.9	63,119	59,901	5.4
Saskatchewan	775,259	801,983	-3.3	18,345	16,832	9.0
Manitoba	3,254,742	3,222,351	1.0	84,380	68,557	23.1
Ontario	4,582,467	4,494,813	2.0	108,741	115,804	-6.1
Quebec	6,635,826	6,249,643	6.2	162,022	151,825	6.7
New Brunswick	68,769	100,088	-31.3	795	1,750	-54.6
Nova Scotia	44,505	125,129	-64.4	637	2,461	-74.1
Prince Edward Island	118,196	157,271	-24.8	1,440	3,780	-61.9
CANADA	18,307,896	18,261,688	0.3	444,201	425,854	4.3

UNITED STATES

Year To Date for the Week Ending November 8, 2008

Supply Summary

	2008	2007	% chg
Slaughter ('000 head)	98,661	91,984	7.3
Slaughter for the week	2,307	2,360	-2.2
Avg Dressed Wt (lbs)	201	204	-1.5
Pork Produced (mil lbs)	19,764	18,475	7.0

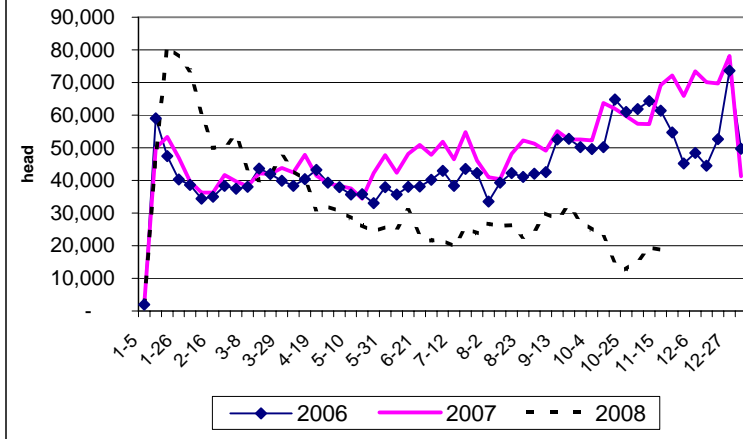
Source: USDA-APHIS

Weekly US Prices (\$/cwt)

	2008	2007	% chg
South St. Joseph	n/a	29.75	
Sioux Falls	37.00	33.00	12.1
Oklahoma City	30.00	30.00	0.0
National Cost	51.84	47.10	10.1

(51-54% Lean Yield Basis)

Canadian Market Hog Exports to the US



Canadian Feeder Hog Exports to the US

