



Hog Statistics at a Glance CANADA



For the Week Ending November 24, 2007

Federal Slaughter

| | weekly kill # head | CUMULATIVE TOTALS TO DATE | | |
|--------------------------------|-----------------------|---------------------------|------------------|--------------|
| | | 2007 | 2006 | % chg |
| | | '000 head | | |
| West | 152,857 | 7,099.0 | 7,741.0 | -8.3 |
| Ontario | 95,493 | 3,939.0 | 3,659.0 | 7.7 |
| Quebec | 160,513 | 6,976.0 | 7,060.0 | -1.2 |
| Atlantic | 6,925 | 311.0 | 364.0 | -14.6 |
| CANADA | 415,788 | 18,325.0 | 18,824.0 | -2.7 |
| Pork Production (t) | 36,381 | 1,612,600 | 1,647,100 | -2.1 |
| *Est Sow/Boar Slaughter | 2,342 | 101,448 | 122,653 | -17.3 |

*Est Sow/Boar Slaughter
*revised includes fed & prov

Weekly Prices \$/100kg (index 100)

| | 2007 | 2006 | % chg |
|------------------|----------|--------|-------|
| | Ontario* | 83.10 | |
| Quebec | 76.67 | 110.72 | -30.8 |
| Alberta | 90.00 | 116.00 | -22.4 |
| Manitoba* | 89.00 | n/a | |
| British Columbia | 103.90 | 140.30 | -25.9 |
| Saskatchewan | 84.50 | 119.00 | -29.0 |
| Nova Scotia | 82.98 | 128.58 | -35.5 |
| Prince Ed. Is. | 87.85 | 125.05 | -29.7 |
| New Brunswick | 78.48 | 124.08 | -36.8 |

*estimate

PORK EXPORTS

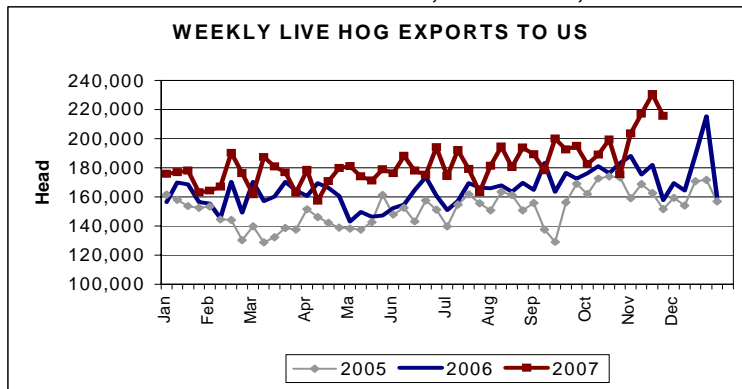
YTD for the period of January 1 - September 30

| (Metric Tonnes) | 2007 | 2006 | % chg |
|---|----------------|----------------|--------------|
| FRESH, FROZEN AND PROCESSED PORK | | | |
| United States | 270,449 | 267,814 | 1.0 |
| Japan | 170,847 | 167,631 | 1.9 |
| Australia | 30,067 | 27,030 | 11.2 |
| Russia | 56,955 | 68,476 | (16.8) |
| Mexico | 39,129 | 40,179 | (2.6) |
| South Korea | 45,836 | 55,280 | (17.1) |
| China | 38,128 | 32,120 | 18.7 |
| Taiwan | 10,226 | 9,521 | 7.4 |
| Cuba | 3,170 | 5,625 | (43.6) |
| New Zealand | 8,221 | 6,813 | 20.7 |
| Other | 71,570 | 100,162 | (28.5) |
| Total | 744,598 | 780,651 | (4.6) |

Source: STATISTICS CANADA

LIVE HOG EXPORTS TO U.S.

| | YTD 07 | YTD 06 | % chg |
|-----------------------------|------------------|------------------|-------------|
| HOGS (head) | | | |
| Barrows/Gilts/Sows | 2,839,346 | 2,444,853 | 16.1 |
| Feeder Pigs | 5,754,355 | 5,292,274 | 8.7 |
| Total | 8,593,701 | 7,737,127 | 11.1 |
| Week Ending 07-11-24 | | | |
| Barrows/Gilts/Sows | 79,561 | 52,186 | 52.5 |
| Feeder Pigs | 136,152 | 105,754 | 28.7 |
| Total | 215,713 | 157,940 | 36.6 |



Source: USDA-APHIS

IMPORTS

YTD for the week ending 07-11-17

| (Metric Tonnes) preliminary | 2007 | 2006 | % chg | 2007 | 2006 | % chg |
|--------------------------------|--------|--------|-------|----------------|---------------|------------|
| FRESH & FROZEN PORK | | | | | | |
| United States | 84,011 | 78,686 | 6.8 | 18,881 | 16,446 | 14.8 |
| Denmark | 1,350 | 137 | | - | 13 | |
| Other | 101 | 3 | | 290 | 148 | 95.9 |
| TOTAL IMPORTS | | | | 104,633 | 95,433 | 9.6 |

Frozen Pork from the European Union:

The TRQ level has established for frozen meat of pork originating from EU countries, for the twelve month period August 1 to July 31, 2008. Imports in excess of 2,970,000 kg in the twelve month period are subject to a surtax in an amount equal to the value for the duty (100%) determined in accordance with the Customs Act.

| | Permits issued as of November 24, 2007 | | |
|------------------|--|-----------|-------|
| | 2007/2008 | 2006/2007 | % chg |
| Utilization (kg) | 2,969,997 | 2,970,000 | 0.0 |
| Balance (kg) | 3 | - | |
| % Utilization | 100.0% | 100.0% | (0.0) |

Prepared by: Red Meat Section, Agriculture and Agri-Food Canada

Contact: Patti Negrave (613) 759-6216 or see us at: <http://www.agr.ca/redmeat>



Hog Statistics at a Glance CANADA

For the Week Ending November 24, 2007

Total Slaughter Year to Date November 24, 2007

| | 2007 | 2006 | % chg |
|----------------------|-------------------|-------------------|-------------|
| British Columbia | 212,076 | 191,970 | 10.5 |
| Alberta | 3,034,391 | 3,396,653 | -10.7 |
| Saskatchewan | 835,836 | 1,008,915 | -17.2 |
| Manitoba | 3,364,742 | 3,501,550 | -3.9 |
| Ontario | 4,727,635 | 4,621,612 | 2.3 |
| Quebec | 6,552,925 | 6,482,597 | 1.1 |
| New Brunswick | 104,459 | 120,624 | -13.4 |
| Nova Scotia | 130,209 | 161,999 | -19.6 |
| Prince Edward Island | 164,383 | 179,965 | -8.7 |
| CANADA | 19,126,656 | 19,665,885 | -2.7 |

Week ending November 24, 2007

| | 2007 | 2006 | % chg |
|----------------------|----------------|----------------|-------------|
| British Columbia | 4,879 | 4,630 | 5.4 |
| Alberta | 65,256 | 69,141 | -5.6 |
| Saskatchewan | 17,026 | 23,189 | -26.6 |
| Manitoba | 74,685 | 78,725 | -5.1 |
| Ontario | 115,313 | 106,107 | 8.7 |
| Quebec | 152,487 | 147,986 | 3.0 |
| New Brunswick | 2,198 | 2,192 | 0.3 |
| Nova Scotia | 2,389 | 3,523 | -32.2 |
| Prince Edward Island | 3,946 | 4,581 | -13.9 |
| CANADA | 438,179 | 440,074 | -0.4 |

UNITED STATES

Year To Date for the Week Ending November 24, 2007

Supply Summary

| | 2007 | 2006 | % chg |
|-------------------------|--------|--------|-------|
| Slaughter ('000 head) | 96,444 | 93,227 | 3.5 |
| Slaughter for the week | 2,022 | 1,971 | 2.6 |
| Avg Dressed Wt (lbs) | 203 | 202 | 0.5 |
| Pork Produced (mil lbs) | 19,363 | 18,710 | 3.5 |

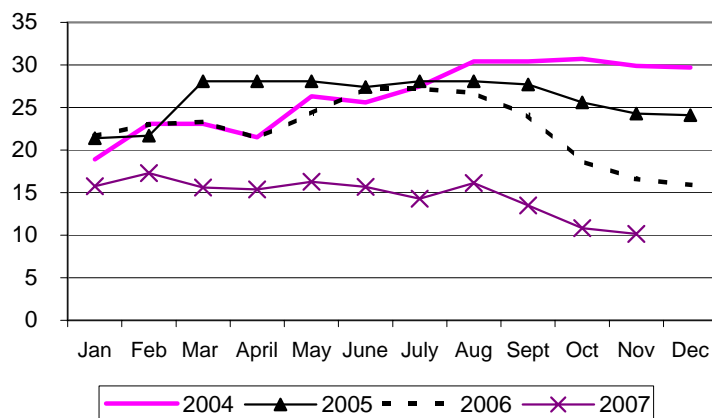
Source: USDA-APHIS

Weekly US Prices (\$/cwt)

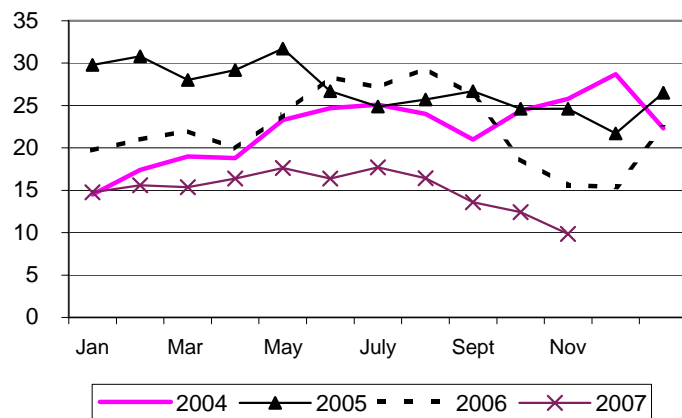
| | 2007 | 2006 | % chg |
|------------------|-------|-------|-------|
| South St. Joseph | 30.75 | 40.75 | -24.5 |
| Sioux Falls | 32.50 | 41.00 | -20.7 |
| Oklahoma City | 26.00 | 38.00 | -31.6 |
| National Cost | 46.86 | 59.00 | -20.6 |

(51-54% Lean Yield Basis)

Alberta Hog/Barley Ratio



Ontario Hog/Corn Ratio



The ratio represents the number of bushels of feed barley or corn, that are equal in value to 100 lbs. of index 100 live hog.