



# Hog Statistics at a Glance CANADA



For the Week Ending October 9, 2010

Federal Slaughter	weekly kill # head	CUMULATIVE TOTALS TO DATE		
		2010	2009	% chg
		'000 head		
West	154,279	6,278.0	6,145.0	2.2
Ontario	79,958	3,113.0	3,520.0	-11.6
Quebec-Atlantic	167,230	6,205.0	6,349.0	-2.3
<b>CANADA</b>	<b>401,467</b>	<b>15,596.0</b>	<b>16,014.0</b>	<b>-2.6</b>
<b>Pork Production (t)</b>	<b>37,537</b>	<b>1,462,905</b>	<b>1,490,903</b>	<b>-1.9</b>
*Estimated Sow/Boar Slaughter	1,195	55,395	56,556	-2.1

Weekly Prices \$/100kg (index 100)	2010	2009	% chg
Quebec	153.87	100.15	53.6
Alberta	142.50	100.10	42.4
Manitoba*	142.00	101.11	40.4
British Columbia	159.50	115.20	38.5
Saskatchewan	139.89	95.30	46.8
Nova Scotia	158.17	102.48	54.3
Prince Ed. Is.	158.17	102.48	54.3
New Brunswick	153.67	97.98	56.8

\*includes federal & provincial slaughter

\*estimate

## PORK EXPORTS

YTD for the period of January 1 to August 31, 2010

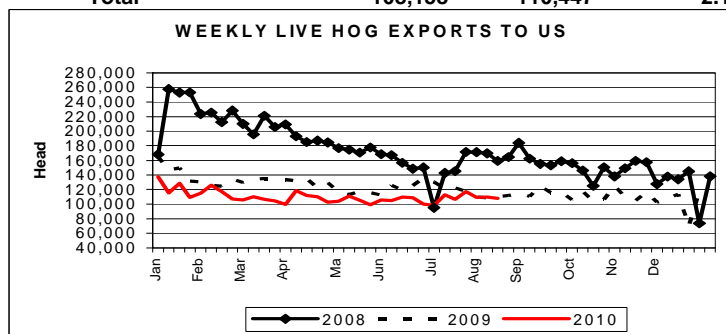
(Metric Tonnes)	2010	2009	% chg
<b>FRESH, FROZEN AND PROCESSED PORK</b>			
United States	219,120	212,363	3.2
Japan	158,392	146,776	7.9
Australia	29,444	35,915	(18.0)
Russia	57,881	43,255	33.8
Mexico	41,022	26,583	54.3
South Korea	35,155	43,055	(18.3)
China	18,486	20,582	(10.2)
Taiwan	18,446	20,434	(9.7)
Cuba	2,628	3,646	(27.9)
New Zealand	6,092	8,006	(23.9)
Hong Kong	45,603	44,241	3.1
Philippines	34,143	27,533	24.0
Other	50,419	58,932	(14.4)
<b>Total</b>	<b>716,831</b>	<b>691,321</b>	<b>3.7</b>

Source: STATISTICS CANADA

Source: USDA-APHIS

## LIVE HOG EXPORTS TO U.S.

Year-to-Date August 21, 2010	2010	2009	% chg
<b>HOGS (head)</b>			
Barrows/Gilts/Sows	673,250	775,494	-13.2
Feeder Pigs	2,962,822	3,419,406	-13.4
<b>Total</b>	<b>3,636,072</b>	<b>4,194,900</b>	<b>-13.3</b>
<b>Week Ending August 21, 2010</b>			
Barrows/Gilts/Sows	21,448	25,068	-14.4
Feeder Pigs	86,710	85,379	1.6
<b>Total</b>	<b>108,158</b>	<b>110,447</b>	<b>-2.1</b>



## IMPORTS

YTD for the week ending October 2, 2010

(Metric Tonnes) preliminary	2010	2009	% chg
<b>FRESH &amp; FROZEN PORK</b>			
United States	72,665	70,602	2.9
Denmark	22	3	633.3
Other	3	2	50.0

PORK PROCESSED	2010	2009	% chg
United States	33,278	28,293	17.6
Denmark	-	-	-
Other	399	424	-5.9
<b>TOTAL IMPORTS</b>	<b>106,367</b>	<b>99,324</b>	<b>7.1</b>

## Frozen Pork from the European Union:

The TRQ level has established for frozen meat of pork originating from EU countries, for the twelve month period August 1, 2010 to July 31, 2011. Imports in excess of 2,970,000 kg in the twelve month period are subject to a surtax in an amount equal to the value for the duty (100%) determined in accordance with the Customs Act.

	Permits issued as of October 9, 2010		
	2010/2011	2009/2010	% chg
Utilization (kg)	2,963,386	2,949,330	0.5
Balance (kg)	6,614	20,670	-68.0
% Utilization	99.8%	99.3%	0.5

Prepared by: Red Meat Section, Agriculture and Agri-Food Canada

Contact: Patti Negrave (613) 773-0226 or e-mail: patti.negrave@agr.gc.ca or see us at: <http://www.agr.ca/redmeat>



## Hog Statistics at a Glance CANADA

### Canadian Hog Slaughter by Province of Origin

Total Federal and Provincial Slaughter Year-to-Date October 9, 2010

Week ending October 9, 2010

	Total Federal and Provincial Slaughter Year-to-Date October 9, 2010			Week ending October 9, 2010		
	2010	2009	% chg	2010	2009	% chg
British Columbia	160,366	166,672	-3.8	3,806	4,755	-20.0
Alberta	1,916,634	2,005,479	-4.4	49,946	51,419	-2.9
Saskatchewan	1,295,455	918,692	41.0	31,521	31,194	1.0
Manitoba	3,229,904	3,328,121	-3.0	76,328	88,551	-13.8
Ontario	3,591,691	4,040,950	-11.1	92,397	107,419	-14.0
Quebec	5,942,714	6,053,704	-1.8	159,788	165,070	-3.2
New Brunswick	48,804	55,087	-11.4	1,357	1,280	6.0
Nova Scotia	6,482	19,539	-66.8	138	228	-39.5
Prince Edward Island	70,838	63,315	11.9	1,707	1,470	16.1
<b>CANADA</b>	<b>16,262,888</b>	<b>16,651,559</b>	<b>-2.3</b>	<b>416,988</b>	<b>451,386</b>	<b>-7.6</b>

NOTE: Please note that coverage for province of origin data in 2009 has been improved, therefore, previous year comparisons may be misleading.

## UNITED STATES

Year To Date for the Week Ending October 9, 2010

### Supply Summary

	2010	2009	% chg
Slaughter ('000 head)	82,664	86,574	-4.5
Slaughter for the week	2,253	2,292	-1.7
Avg Dressed Wt (lbs)	202	202	0.0
Pork Produced (mil lbs)	16,736	17,545	-4.6

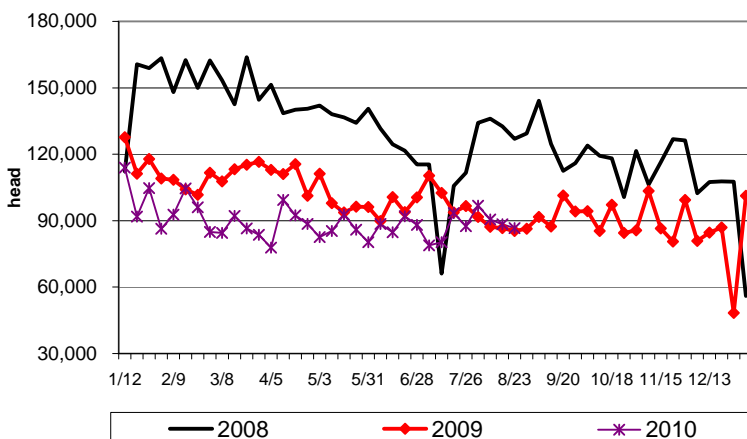
Source: USDA-APHIS

### Weekly US Prices (\$/cwt)

(weighted weekly average carcass)

	2010	2009	% chg
Iowa/Minnesota	75.06	52.41	43.2
Western Cornbelt	75.09	52.21	43.8
Eastern Cornbelt	74.81	51.75	44.6
National	75.03	52.04	44.2

Canadian Feeder Hog Exports to the US



Canadian Market Hog Exports to the US

