



Hog Statistics at a Glance CANADA



For the Week Ending September 10, 2011

Federal Slaughter

	weekly kill # head	CUMULATIVE TOTALS TO DATE		
		2011	2010	% chg
		<i>'000 head</i>		
West	137,101	5,600.0	5,635.0	-0.6
Ontario	69,658	2,758.0	2,782.0	-0.9
Quebec-Atlantic	131,005	5,413.0	5,541.0	-2.3
CANADA	337,764	13,771.0	13,958.0	-1.3
Pork Production (t)	31,581	1,294,474	1,312,052	-1.3
*Estimated Sow/Boar Slaughter	1,390	58,034	51,190	13.4

*Includes federal & provincial slaughter

Weekly Prices \$/100kg (index 100)

	2011	2010	% chg
Ontario**	185.18	155.75	18.9
Quebec	166.41	157.91	5.4
Alberta	161.10	149.70	7.6
Manitoba*	153.00	151.86	0.8
British Columbia	171.50	162.30	5.7
Saskatchewan	149.99	152.85	-1.9
Nova Scotia	173.59	161.45	7.5
Prince Ed. Is.	171.46	161.45	6.2
New Brunswick	158.91	156.95	1.2

*Estimate

** As of December 4, 2010 the Ontario hog price changed from an Index 100 price to a Dressed Weight (Total Value FOB yard) price.

PORK EXPORTS

YTD for the period of January 1 to June 30, 2011

(Metric Tonnes)

FRESH, FROZEN AND PROCESSED PORK

	2011	2010	% chg
United States	150,377	157,890	(4.8)
Japan	110,629	126,892	(12.8)
Australia	17,020	22,294	(23.7)
Russia	60,423	49,906	21.1
Mexico	27,226	28,456	(4.3)
South Korea	55,368	28,549	93.9
China	46,206	10,136	355.9
Taiwan	15,746	13,356	17.9
Cuba	972	2,434	(60.1)
New Zealand	4,756	4,236	12.3
Hong Kong	11,993	39,831	(69.9)
Philippines	17,216	25,324	(32.0)
Other	36,214	40,375	(10.3)
Total	554,146	549,679	0.8

Source: Statistics Canada

LIVE HOG EXPORTS TO U.S.

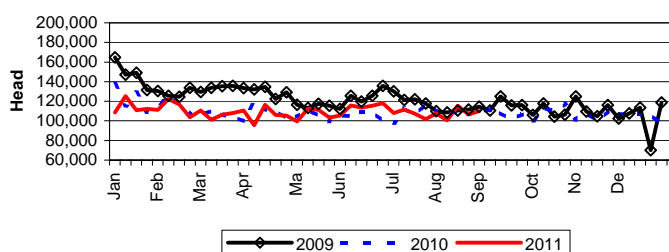
Year-to-Date September 3, 2011	2011	2010	% chg
HOGS (head)			
Barrows/Gilts/Sows	671,170	719,093	-6.7
Feeder Pigs	3,164,974	3,142,027	0.7
Total	3,836,144	3,861,120	-0.6

Week Ending September 3, 2011

Barrows/Gilts/Sows	17,249	22,990	-25.0
Feeder Pigs	92,654	89,050	4.0
Total	109,903	112,040	-1.9

Source: USDA-APHIS

WEEKLY LIVE HOG EXPORTS TO US



IMPORTS

YTD for the week ending September 3, 2011

(Metric Tonnes) preliminary

FRESH & FROZEN PORK

	2011	2010	% chg
United States	69,761	66,578	4.8
Denmark	175	-	
Other	9	4	125.0

PORK PROCESSED	2011	2010	% chg
United States	34,138	28,719	18.9
Denmark	-	-	
Other	468	373	25.5
TOTAL IMPORTS	104,551	95,674	9.3

Prepared by: Red Meat Section, Agriculture and Agri-Food Canada

Contact: Patti Negrave (613) 773-0226 or e-mail: patti.negrave@agr.gc.ca or see us at: <http://www.agr.ca/redmeat>



Hog Statistics at a Glance CANADA

Canadian Hog Slaughter by Province of Origin

Total Federal and Provincial Slaughter Year-to-Date September 10, 2011

Week ending September 10, 2011

	2011			2010			Week ending September 10, 2011		
	2011	2010	% chg	2011	2010	% chg	2011	2010	% chg
British Columbia	117,103	143,939	-18.6	3,420	3,252	5.2			
Alberta	1,639,019	1,720,672	-4.7	38,287	39,013	-1.9			
Saskatchewan	1,191,653	1,128,235	5.6	30,534	30,236	1.0			
Manitoba	2,915,142	2,900,854	0.5	72,048	71,749	0.4			
Ontario	3,272,060	3,206,608	2.0	84,924	73,591	15.4			
Quebec	5,092,604	5,315,034	-4.2	122,237	128,709	-5.0			
New Brunswick	31,561	42,193	-25.2	677	821	-17.5			
Nova Scotia	6,230	5,997	3.9	164	162	1.2			
Prince Edward Island	60,442	63,724	-5.2	1,542	1,500	2.8			
CANADA	14,325,814	14,527,256	-1.4	353,833	349,033	1.4			

UNITED STATES

Year To Date for the Week Ending September 10, 2011

Supply Summary	2011			2010			Weekly US Prices (\$/cwt) (weighted weekly average carcass)			
	2011	2010	% chg	2011	2010	% chg	2011	2010	% chg	
Slaughter ('000 head)	73,575	73,886	-0.4				Iowa/Minnesota	85.30	78.92	8.1
Slaughter for the week	2,004	1,924	4.2				Western Cornbelt	85.14	78.93	7.9
Avg Dressed Wt (lbs)	199	202	-1.5				Eastern Cornbelt	84.73	78.12	8.5
Pork Produced (mil lbs)	15,086	14,966	0.8				National	82.11	79.46	3.3

Source: USDA-APHIS

LEADING MARKETS FOR U.S. PORK PLUS VARIETY MEAT EXPORTS (January to July 2011)

COUNTRY	Year to date (Quantity Tonnes)			COUNTRY	Year to date (Quantity Tonnes)		
	1/11 - 7/11	1/10 - 7/10	% chg		1/11 - 7/11	1/10 - 7/10	% chg
Japan	287,466	259,947	10.6%	Philippines	22,921	34,825	-34.2%
Mexico	300,234	311,206	-3.5%	Taiwan	17,949	18,583	-3.4%
Canada	113,431	104,132	8.9%	Cent. & South America	38,758	32,484	19.3%
China	152,986	29,653	415.9%	Korea	136,359	55,883	144.0%
Hong Kong	57,099	114,118	-50.0%	Caribbean	19,996	26,933	-25.8%
Russia	40,930	45,696	-10.4%	Eastern Europe	5,584	10,831	-48.4%
European Union	5,584	10,831	-48.4%	World Total	1,252,096	1,097,879	14.0%

Source: Statistics Provided by USDA and Compiled by U.S. Meat Export Federation (USMEF)