



Hog Statistics at a Glance CANADA



For the Week Ending September 29, 2007

Federal Slaughter

	weekly kill # head	CUMULATIVE TOTALS TO DATE		
		2007	2006	% chg
		'000 head		
West	156,748	5,900.0	6,444.0	-8.4
Ontario	84,409	3,193.0	2,970.0	7.5
Quebec	155,303	5,740.0	5,831.0	-1.6
Atlantic	6,765	260.0	300.0	-13.3
CANADA	403,225	15,093.0	15,545.0	-2.9
Pork Production (t)	35,282	1,328,184	1,360,188	-2.4
*Est Sow/Boar Slaughter	1,995	84,380	106,470	-20.7

*revised includes fed & prov

Weekly Prices \$/100kg (index 100)

	2007	2006	% chg
Ontario*	100.40	134.20	-25.2
Quebec	110.14	120.53	-8.6
Alberta	111.50	121.00	-7.9
Manitoba*	117.00	132.00	-11.4
British Columbia	132.90	149.50	-11.1
Saskatchewan	110.00	121.60	-9.5
Nova Scotia	117.09	140.96	-16.9
Prince Ed. Is.	118.44	136.50	-13.2
New Brunswick	112.59	136.46	-17.5

*estimate

PORK EXPORTS

YTD for the period of January 1 - July 31

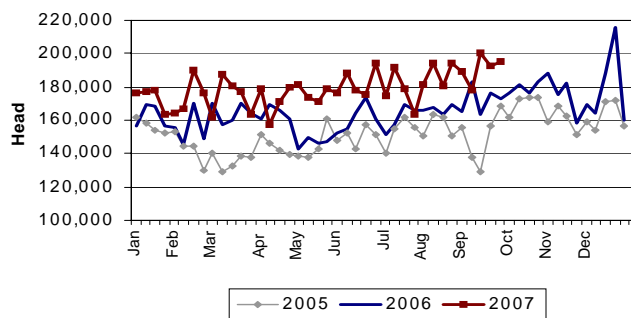
(Metric Tonnes)	2007	2006	% chg
FRESH, FROZEN AND PROCESSED PORK			
United States	211,615	208,284	1.6
Japan	136,508	135,687	0.6
Australia	23,315	20,202	15.4
Russia	41,648	55,143	(24.5)
Mexico	30,744	30,817	(0.2)
South Korea	36,695	39,548	(7.2)
China	26,712	24,808	7.7
Taiwan	6,984	8,073	(13.5)
Cuba	2,844	5,008	(43.2)
New Zealand	6,634	4,669	42.1
Other	55,986	71,006	(21.2)
Total	579,685	603,245	(3.9)

Source: STATISTICS CANADA

LIVE HOG EXPORTS TO U.S.

	YTD 07	YTD 06	% chg
HOGS (head)			
Barrows/Gilts/Sows	2,239,447	1,916,616	16.8
Feeder Pigs	4,740,706	4,399,671	7.8
Total	6,980,153	6,316,287	10.5
Week Ending 07-09-29			
Barrows/Gilts/Sows	64,332	57,911	11.1
Feeder Pigs	130,565	114,574	14.0
Total	194,897	172,485	13.0

WEEKLY LIVE HOG EXPORTS TO US



Source: USDA-APHIS

IMPORTS

YTD for the week ending 07-09-22

(Metric Tonnes) preliminary	2007	2006	% chg	2007	2006	% chg
FRESH & FROZEN PORK						
United States	61,369	64,296	-4.6	15,974	13,681	16.8
Denmark	1,120	87		-	-	
Other	101	1		239	122	95.9
TOTAL IMPORTS				78,803	78,187	0.8

Frozen Pork from the European Union:

The TRQ level has established for frozen meat of pork originating from EU countries, for the twelve month period August 1 to July 31, 2008. Imports in excess of 2,970,000 kg in the twelve month period are subject to a surtax in an amount equal to the value for the duty (100%) determined in accordance with the Customs Act.

	Permits issued as of September 29, 2007		
	2007/2008	2006/2007	% chg
Utilization (kg)	2,969,997	2,970,000	0.0
Balance (kg)	3	-	
% Utilization	100.0%	100.0%	(0.0)

Prepared by: Red Meat Section, Agriculture and Agri-Food Canada

Contact: Patti Negrave (613) 759-6216 or see us at: <http://www.agr.ca/redmeat>



Hog Statistics at a Glance CANADA

Canadian Hog Slaughter by Province of Origin

Total Slaughter Year to Date September 29, 2007

Week ending September 29, 2007

	2007	2006	% chg	2007	2006	% chg
British Columbia	173,308	155,856	11.2	4,675	4,394	6.4
Alberta	2,513,576	2,854,427	-11.9	69,069	72,042	-4.1
Saskatchewan	706,476	835,479	-15.4	16,526	21,201	-22.1
Manitoba	2,800,509	2,893,901	-3.2	73,673	79,178	-7.0
Ontario	3,872,290	3,774,817	2.6	100,096	101,141	-1.0
Quebec	5,380,098	5,341,486	0.7	147,786	148,311	-0.4
New Brunswick	87,155	97,304	-10.4	1,915	2,338	-18.1
Nova Scotia	110,781	134,772	-17.8	2,480	3,364	-26.3
Prince Edward Island	133,993	148,687	-9.9	3,910	3,648	7.2
CANADA	15,778,186	16,236,729	-2.8	420,130	435,617	-3.6

UNITED STATES

Year To Date for the Week Ending September 29, 2007

Supply Summary

	2007	2006	% chg
Slaughter ('000 head)	78,013	76,087	2.5
Slaughter for the week	2,223	2,140	3.9
Avg Dressed Wt (lbs)	199	200	-0.5
Pork Produced (mil lbs)	15,645	15,264	2.5

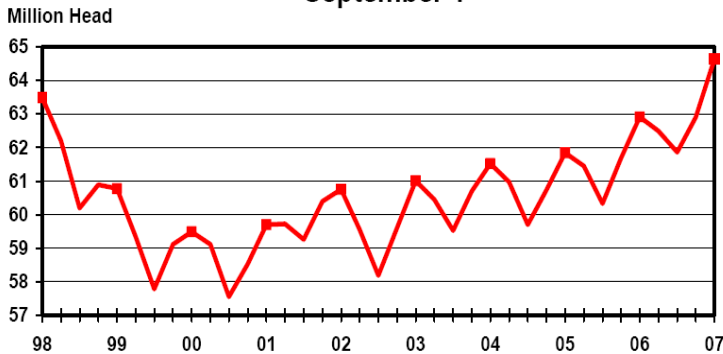
Source: USDA-APHIS

Weekly US Prices (\$/cwt)

	2007	2006	% chg
South St. Joseph	36.75	48.75	-24.6
Sioux Falls	38.00	49.25	-22.8
Oklahoma City	34.00	41.00	-17.1
National Cost	57.83	60.91	-5.1

(51-54% Lean Yield Basis)

U.S. Quarterly Hogs and Pigs Inventory
September 1



U.S. Hog Inventory & Market Hogs
September 1

