

# Hog Supply at a Glance

Week Ending November 3, 2018



## Hog Slaughter at Federally Inspected Packing Plants

Number of Head

|                                | Week Ending    |                | Chg            | YTD Ending        |                   | Chg            |
|--------------------------------|----------------|----------------|----------------|-------------------|-------------------|----------------|
|                                | 3-Nov-18       | 4-Nov-17       |                | 3-Nov-18          | 4-Nov-17          |                |
| West                           | 171,715        | 174,926        | ↓ -1.8%        | 7,017,825         | 7,123,765         | ↓ -1.5%        |
| East                           | 256,888        | 255,591        | ↑ 0.5%         | 10,332,097        | 10,379,847        | ↓ -0.5%        |
| <b>Canada</b>                  | <b>428,603</b> | <b>430,517</b> | <b>↓ -0.4%</b> | <b>17,349,922</b> | <b>17,503,612</b> | <b>↓ -0.9%</b> |
| <b>Carcass weight (kg) [1]</b> | <b>101.31</b>  | <b>101.38</b>  | <b>↓ -0.1%</b> | <b>102.06</b>     | <b>101.29</b>     | <b>↑ 0.8%</b>  |
| <b>Pork Production (t)</b>     | <b>43,422</b>  | <b>43,648</b>  | <b>↓ -0.5%</b> | <b>1,770,814</b>  | <b>1,773,014</b>  | <b>↓ -0.1%</b> |

[1] Week ending = September average (kg)

YTD = January to September average (kg)

Source: Canadian Food Inspection Agency (CFIA)

Note: West (BC, AB, SK, MB) and East (ON, QC, NB, NS, PE)

## Hog Prices [1]

CDN\$/100kg

|                      | Week Ending |          | Chg     | YTD Avg Price Ending |          | Chg     |
|----------------------|-------------|----------|---------|----------------------|----------|---------|
|                      | 3-Nov-18    | 4-Nov-17 |         | 3-Nov-18             | 4-Nov-17 |         |
| British Columbia     | 158.45      | 161.15   | ↓ -1.7% | 162.20               | 175.68   | ↓ -7.7% |
| Alberta              | 146.10      | 155.80   | ↓ -6.2% | 150.54               | 165.35   | ↓ -9.0% |
| Saskatchewan         | 146.63      | 154.83   | ↓ -5.3% | 149.95               | 165.58   | ↓ -9.4% |
| Manitoba*            | 157.00      | 162.27   | ↓ -3.2% | 158.52               | 170.31   | ↓ -6.9% |
| Ontario [1]          | 183.24      | 186.59   | ↓ -1.8% | 182.72               | 201.63   | ↓ -9.4% |
| Quebec               | 154.96      | 163.35   | ↓ -5.1% | 157.99               | 174.89   | ↓ -9.7% |
| New Brunswick        | 151.61      | 160.63   | ↓ -5.6% | 155.05               | 171.19   | ↓ -9.4% |
| Nova Scotia          | 163.23      | 163.67   | ↓ -0.3% | 163.85               | 179.80   | ↓ -8.9% |
| Prince Edward Island | 157.48      | 160.52   | ↓ -1.9% | 158.42               | 174.63   | ↓ -9.3% |

[1] Provincial prices reflect Index 100, except Ontario which is total value FOB yard price.

\*Estimate for 2018

Source: Provincial Pork Associations, Provincial Governments

## Canadian Hog Slaughter by Province of Origin

Number of Head

|                      | Week Ending    |                | Chg            | YTD Ending        |                   | Chg            |
|----------------------|----------------|----------------|----------------|-------------------|-------------------|----------------|
|                      | 3-Nov-18       | 4-Nov-17       |                | 3-Nov-18          | 4-Nov-17          |                |
| British Columbia     | 3,767          | 3,644          | ↑ 3.4%         | 168,939           | 159,388           | ↑ 6.0%         |
| Alberta              | 42,776         | 45,421         | ↓ -5.8%        | 1,880,835         | 1,862,358         | ↑ 1.0%         |
| Saskatchewan         | 38,169         | 33,993         | ↑ 12.3%        | 1,407,137         | 1,462,459         | ↓ -3.8%        |
| Manitoba             | 93,826         | 100,587        | ↓ -6.7%        | 3,895,706         | 3,963,433         | ↓ -1.7%        |
| Ontario              | 117,606        | 121,940        | ↓ -3.6%        | 4,675,383         | 4,675,961         | 0.0%           |
| Quebec               | 147,307        | 141,477        | ↑ 4.1%         | 5,958,667         | 6,050,453         | ↓ -1.5%        |
| New Brunswick        | 616            | 455            | ↑ 35.4%        | 21,889            | 14,822            | ↑ 47.7%        |
| Nova Scotia          | 301            | 216            | ↑ 39.4%        | 11,912            | 9,184             | ↑ 29.7%        |
| Prince Edward Island | 1,608          | 957            | ↑ 68.0%        | 41,510            | 37,805            | ↑ 9.8%         |
| <b>Canada</b>        | <b>445,976</b> | <b>448,690</b> | <b>↓ -0.6%</b> | <b>18,061,978</b> | <b>18,235,863</b> | <b>↓ -1.0%</b> |

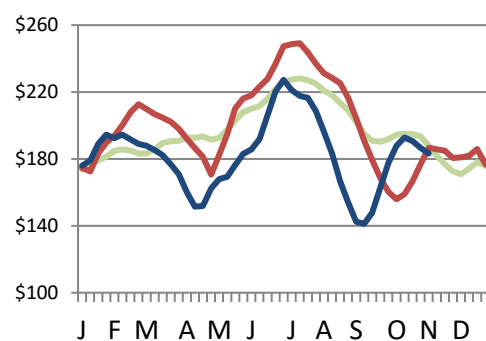
## Estimated Sow/Boar Slaughter (includes federal & provincial slaughter)

|               |              |              |               |               |               |               |
|---------------|--------------|--------------|---------------|---------------|---------------|---------------|
| West          | 581          | 375          | ↑ 54.9%       | 20,305        | 15,834        | ↑ 28.2%       |
| East          | 1,331        | 1,384        | ↓ -3.8%       | 51,411        | 54,036        | ↓ -4.9%       |
| <b>Canada</b> | <b>1,912</b> | <b>1,759</b> | <b>↑ 8.7%</b> | <b>71,716</b> | <b>69,870</b> | <b>↑ 2.6%</b> |

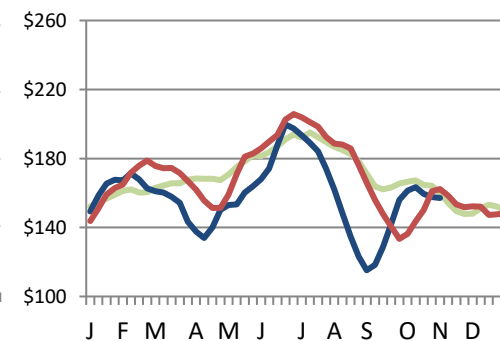
Source: CFIA and Provincial Governments

## Ontario Hog Price - Dressed Weight

(Total Value FOB yard)



## Manitoba Hog Price - Index 100



— AVERAGE (2012-2016) — 2017 — 2018

Weekly Weighted Avg. Price (CDN\$/100kg)

Source: Provincial Pork Associations, Provincial Governments

# Exports

## Canadian Pork Exports

Metric tonnes

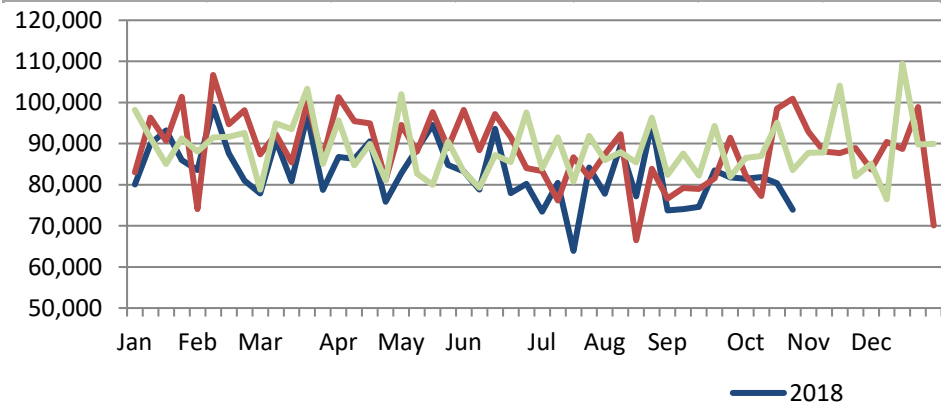
|               | Monthly        |                | Chg      | %           | YTD Ending     |                | Chg      | %            |
|---------------|----------------|----------------|----------|-------------|----------------|----------------|----------|--------------|
|               | Sep 2018       | Sep 2017       |          |             | Sep 2018       | Sep 2017       |          |              |
| United States | 31,174         | 30,305         | ↑        | 2.9%        | 261,309        | 283,457        | ↓        | -7.8%        |
| China         | 20,832         | 20,782         | ↑        | 0.2%        | 199,950        | 231,623        | ↓        | -13.7%       |
| Japan         | 21,325         | 20,845         | ↑        | 2.3%        | 196,896        | 183,580        | ↑        | 7.3%         |
| Mexico        | 14,230         | 11,203         | ↑        | 27.0%       | 110,719        | 91,827         | ↑        | 20.6%        |
| Philippines   | 4,017          | 3,600          | ↑        | 11.6%       | 38,775         | 31,913         | ↑        | 21.5%        |
| South Korea   | 3,087          | 3,295          | ↓        | -6.3%       | 34,560         | 29,211         | ↑        | 18.3%        |
| Taiwan        | 2,399          | 4,309          | ↓        | -44.3%      | 29,748         | 28,619         | ↑        | 3.9%         |
| Australia     | 1,312          | 1,449          | ↓        | -9.4%       | 10,672         | 13,573         | ↓        | -21.4%       |
| New Zealand   | 1,221          | 907            | ↑        | 34.7%       | 8,413          | 7,762          | ↑        | 8.4%         |
| Hong Kong     | 532            | 749            | ↓        | -29.0%      | 5,190          | 5,962          | ↓        | -12.9%       |
| Other         | 3,928          | 5,278          | ↓        | -25.6%      | 39,027         | 49,113         | ↓        | -20.5%       |
| <b>Total</b>  | <b>104,057</b> | <b>102,722</b> | <b>↑</b> | <b>1.3%</b> | <b>935,259</b> | <b>956,641</b> | <b>↓</b> | <b>-2.2%</b> |

Domestic exports only (excludes re-exports)

Source: Statistics Canada

## Canadian Feeder Hog Exports to the US

|                | Week Ending |           | Chg | %      | YTD Ending |           | Chg | %     |
|----------------|-------------|-----------|-----|--------|------------|-----------|-----|-------|
|                | 27-Oct-18   | 28-Oct-17 |     |        | 27-Oct-18  | 28-Oct-17 |     |       |
| Number of Head | 73,893      | 100,896   | ↓   | -26.8% | 3,575,925  | 3,822,919 | ↓   | -6.5% |



Source: USDA - APHIS

## Canadian Pork Exports

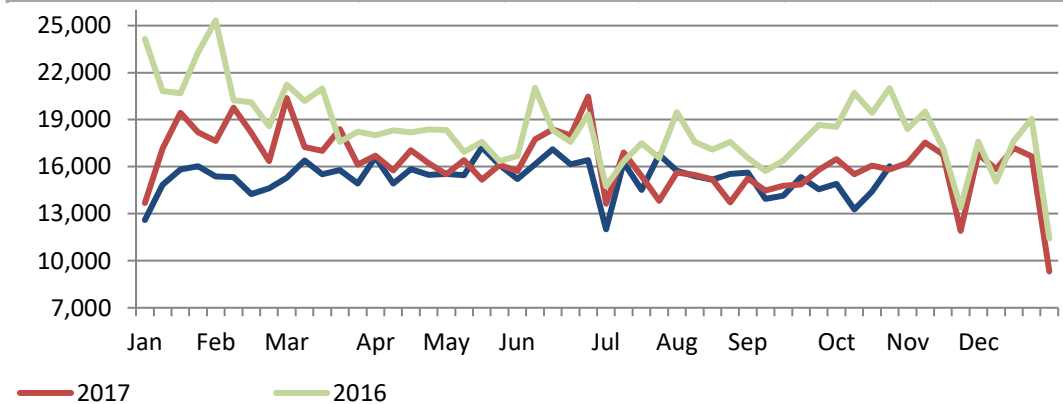
CDN\$ ('000)

|               | Monthly        |                | Chg      | %            | YTD Ending       |                  | Chg      | %            |
|---------------|----------------|----------------|----------|--------------|------------------|------------------|----------|--------------|
|               | Sep 2018       | Sep 2017       |          |              | Sep 2018         | Sep 2017         |          |              |
| United States | 99,776         | 104,539        | ↓        | -4.6%        | 927,580          | 1,096,186        | ↓        | -15.4%       |
| China         | 33,872         | 36,318         | ↓        | -6.7%        | 345,493          | 421,917          | ↓        | -18.1%       |
| Japan         | 103,009        | 101,173        | ↑        | 1.8%         | 945,906          | 887,645          | ↑        | 6.6%         |
| Mexico        | 25,188         | 16,857         | ↑        | 49.4%        | 177,778          | 144,813          | ↑        | 22.8%        |
| Philippines   | 8,496          | 8,456          | ↑        | 0.5%         | 82,640           | 69,002           | ↑        | 19.8%        |
| South Korea   | 10,159         | 10,204         | ↓        | -0.4%        | 120,135          | 96,191           | ↑        | 24.9%        |
| Taiwan        | 5,114          | 10,443         | ↓        | -51.0%       | 65,694           | 68,897           | ↓        | -4.6%        |
| Australia     | 4,098          | 5,063          | ↓        | -19.1%       | 35,435           | 47,284           | ↓        | -25.1%       |
| New Zealand   | 3,210          | 3,079          | ↑        | 4.2%         | 24,268           | 24,034           | ↑        | 1.0%         |
| Hong Kong     | 1,306          | 1,980          | ↓        | -34.0%       | 12,179           | 13,898           | ↓        | -12.4%       |
| Other         | 9,119          | 12,303         | ↓        | -25.9%       | 90,149           | 124,162          | ↓        | -27.4%       |
| <b>Total</b>  | <b>303,347</b> | <b>310,416</b> | <b>↓</b> | <b>-2.3%</b> | <b>2,827,256</b> | <b>2,994,029</b> | <b>↓</b> | <b>-5.6%</b> |

Domestic exports only (excludes re-exports)

## Canadian Market Hogs/Sows/Boars Exports to the US

|                | Week Ending |           | Chg | %    | YTD Ending |           | Chg | %     |
|----------------|-------------|-----------|-----|------|------------|-----------|-----|-------|
|                | 27-Oct-18   | 28-Oct-17 |     |      | 27-Oct-18  | 28-Oct-17 |     |       |
| Number of Head | 16,027      | 15,828    | ↑   | 1.3% | 658,664    | 707,704   | ↓   | -6.9% |



# Imports

## Canadian Pork Imports

Metric tonnes

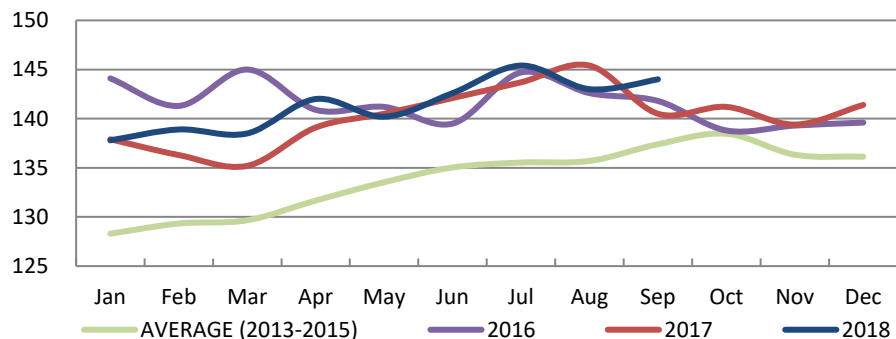
|                               | Week Ending  |              | Chg            | YTD Ending     |                | Chg           |
|-------------------------------|--------------|--------------|----------------|----------------|----------------|---------------|
|                               | 3-Nov-18     | 4-Nov-17     |                | 3-Nov-18       | 4-Nov-17       |               |
| <b>Fresh and Frozen Pork</b>  |              |              |                |                |                |               |
| United States                 | 2,511        | 2,331        | ↑ 7.7%         | 101,747        | 101,208        | ↑ 0.5%        |
| Poland                        | 0            | 0            | -              | 4,869          | 3,927          | ↑ 24.0%       |
| Germany                       | 22           | 49           | ↓ -54.8%       | 3,194          | 2,488          | ↑ 28.4%       |
| Denmark                       | 0            | 54           | -              | 3,175          | 2,281          | ↑ 39.2%       |
| Spain                         | 55           | 73           | ↓ -24.7%       | 2,393          | 2,147          | ↑ 11.5%       |
| Other                         | 24           | 167          | ↓ -85.6%       | 4,443          | 4,060          | ↑ 9.4%        |
| <b>Total Fresh and Frozen</b> | <b>2,612</b> | <b>2,674</b> | <b>↓ -2.3%</b> | <b>119,820</b> | <b>116,111</b> | <b>↑ 3.2%</b> |

Source: CFIA

## Market Indicators

### Consumer Price Index - Fresh or Frozen Pork

2002 Base, Monthly



Source: Statistics Canada

### Estimated Average Value of the Pork Carcass Cutout on the US Wholesale Market

(US\$/cwt)

|         | Week Ending |          | Chg      | YTD Avg Value Ending |          | Chg      |
|---------|-------------|----------|----------|----------------------|----------|----------|
|         | 3-Nov-18    | 4-Nov-17 |          | 3-Nov-18             | 4-Nov-17 |          |
| Carcass | 74.82       | 78.11    | ↓ -4.2%  | 75.02                | 84.20    | ↓ -10.9% |
| Loin    | 71.80       | 74.31    | ↓ -3.4%  | 74.59                | 81.32    | ↓ -8.3%  |
| Butt    | 89.87       | 86.83    | ↑ 3.5%   | 93.55                | 91.41    | ↑ 2.3%   |
| Pic     | 47.84       | 61.23    | ↓ -21.9% | 48.06                | 56.19    | ↓ -14.5% |
| Rib     | 117.34      | 122.41   | ↓ -4.1%  | 126.51               | 124.63   | ↑ 1.5%   |
| Ham     | 50.56       | 69.46    | ↓ -27.2% | 55.56                | 64.26    | ↓ -13.5% |
| Belly   | 133.63      | 107.17   | ↑ 24.7%  | 118.11               | 144.07   | ↓ -18.0% |

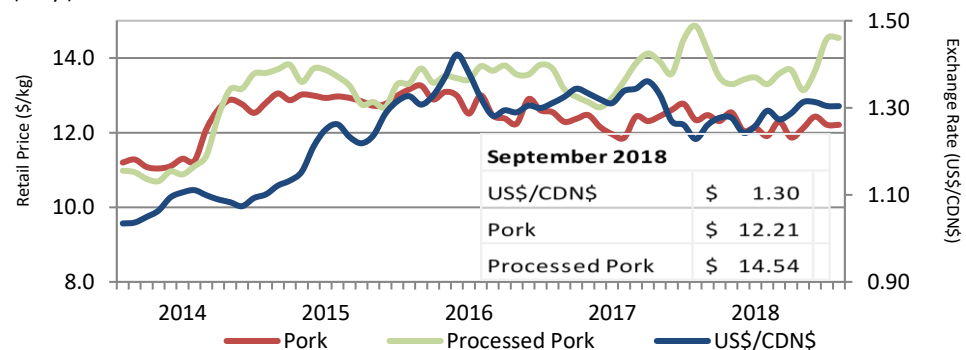
Source: USDA-APHIS: National Weekly Pork Report

|                        | Week Ending  |              | Chg             | YTD Ending     |                | Chg             |
|------------------------|--------------|--------------|-----------------|----------------|----------------|-----------------|
|                        | 3-Nov-18     | 4-Nov-17     |                 | 3-Nov-18       | 4-Nov-17       |                 |
| <b>Pork Processed</b>  |              |              |                 |                |                |                 |
| United States          | 1,241        | 1,128        | ↑ 10.0%         | 56,688         | 53,737         | ↑ 5.5%          |
| Italy                  | 6            | 78           | ↓ -92.3%        | 1,995          | 1,844          | ↑ 8.2%          |
| China                  | 7            | 19           | ↓ -60.7%        | 791            | 774            | ↑ 2.3%          |
| Other                  | 0            | 26           | ↓ -99.4%        | 1,318          | 1,030          | ↑ 28.0%         |
| <b>Total Processed</b> | <b>1,255</b> | <b>1,251</b> | <b>↑ 0.3%</b>   | <b>60,792</b>  | <b>57,386</b>  | <b>↑ 5.9%</b>   |
| <b>Total Pork Fat</b>  | <b>18</b>    | <b>24</b>    | <b>↓ -25.2%</b> | <b>332</b>     | <b>748</b>     | <b>↓ -55.6%</b> |
| <b>Total</b>           | <b>3,884</b> | <b>3,949</b> | <b>↓ -1.6%</b>  | <b>180,944</b> | <b>174,245</b> | <b>↑ 3.8%</b>   |

Source: CFIA

### Exchange Rate and Retail Prices for Pork Products

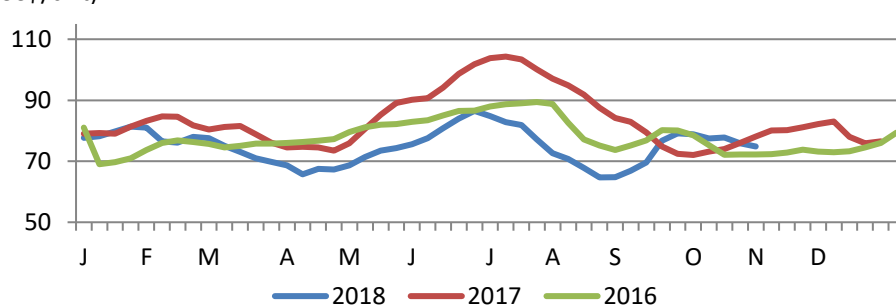
\$/US/\$CDN



Source: Statistics Canada and Bank of Canada

### Estimated Carcass Value on the US Wholesale Market

(US\$/cwt)



\* Calculations based on a 205 lb Pork Carcass. 53-54% lean, 0.65"-0.80" BF last rib

## United States

### United States Hog Slaughter and Pork Production

|                            | Week Ending |          | Chg     | YTD Ending |          | Chg    |
|----------------------------|-------------|----------|---------|------------|----------|--------|
|                            | 3-Nov-18    | 4-Nov-17 |         | 3-Nov-18   | 4-Nov-17 |        |
| Slaughter ('000 head)      | 2,593       | 2,443    | ↑ 6.1%  | 103,494    | 101,143  | ↑ 2.3% |
| Pork Production (mil. lbs) | 545         | 518      | ↑ 5.3%  | 21,861     | 21,300   | ↑ 2.6% |
| Avg Dressed Weight (lbs)   | 210         | 212      | ↓ -0.9% |            |          |        |

Source: United State Department of Agriculture (USDA)

### United States Hog Market Prices - By Region

Weighted weekly average carcass (US\$/cwt)

|                  | Week Ending |          | Chg     | YTD Ending |          | Chg     |
|------------------|-------------|----------|---------|------------|----------|---------|
|                  | 3-Nov-18    | 4-Nov-17 |         | 3-Nov-18   | 4-Nov-17 |         |
| US - National    | 63.41       | 67.57    | ↓ -6.2% | 66.06      | 70.49    | ↓ -6.3% |
| Eastern Cornbelt | 64.23       | 69.08    | ↓ -7.0% | 66.66      | 70.68    | ↓ -5.7% |
| Iowa Minnesota   | 63.09       | 66.79    | ↓ -5.5% | 65.86      | 70.29    | ↓ -6.3% |
| Western Cornbelt | 63.15       | 66.91    | ↓ -5.6% | 65.76      | 70.51    | ↓ -6.7% |

#### Total composite weighted average prices\*

|                   |       |       |          |       |       |         |
|-------------------|-------|-------|----------|-------|-------|---------|
| Early Weaned Pigs | 40.49 | 41.37 | ↓ -2.1%  | 38.04 | 36.80 | ↑ 3.4%  |
| 40 lb Feeder Pigs | 40.48 | 53.78 | ↓ -24.7% | 51.54 | 56.21 | ↓ -8.3% |

\*Includes Formula and Cash

Source: USDA: National Direct

### United States Pork Imports

Carcass weight - tonnes

|                | Monthly       |               | Chg             | YTD Ending     |                | Chg            |
|----------------|---------------|---------------|-----------------|----------------|----------------|----------------|
|                | Sep 2018      | Sep 2017      |                 | Sep 2018       | Sep 2017       |                |
| Canada         | 21,303        | 27,090        | ↓ -21.4%        | 212,266        | 245,347        | ↓ -13.5%       |
| Poland         | 4,346         | 6,366         | ↓ -31.7%        | 60,132         | 55,495         | ↑ 8.4%         |
| Denmark        | 2,272         | 2,573         | ↓ -11.7%        | 29,563         | 23,943         | ↑ 23.5%        |
| Mexico         | 2,005         | 1,402         | ↑ 43.0%         | 15,510         | 11,696         | ↑ 32.6%        |
| United Kingdom | 798           | 461           | ↑ 73.2%         | 8,270          | 6,340          | ↑ 30.4%        |
| Other          | 4,176         | 3,711         | ↑ 12.5%         | 34,685         | 32,999         | ↑ 5.1%         |
| <b>Total</b>   | <b>34,901</b> | <b>41,603</b> | <b>↓ -16.1%</b> | <b>360,428</b> | <b>375,820</b> | <b>↓ -4.1%</b> |

Source: USDA, Economic Research Service

### United States Pork Exports

Carcass weight - tonnes

|              | Monthly        |                | Chg           | YTD Ending       |                  | Chg           |
|--------------|----------------|----------------|---------------|------------------|------------------|---------------|
|              | Sep 2018       | Sep 2017       |               | Sep 2018         | Sep 2017         |               |
| Mexico       | 59,311         | 66,092         | ↓ -10.3%      | 606,106          | 596,209          | ↑ 1.7%        |
| Japan        | 42,023         | 41,629         | ↑ 0.9%        | 411,270          | 412,236          | ↓ -0.2%       |
| South Korea  | 17,030         | 12,518         | ↑ 36.0%       | 233,581          | 166,053          | ↑ 40.7%       |
| Canada       | 23,204         | 23,035         | ↑ 0.7%        | 177,022          | 178,428          | ↓ -0.8%       |
| China        | 7,817          | 9,358          | ↓ -16.5%      | 119,998          | 129,775          | ↓ -7.5%       |
| Other        | 46,701         | 38,502         | ↑ 21.3%       | 415,513          | 371,439          | ↑ 11.9%       |
| <b>Total</b> | <b>196,085</b> | <b>191,134</b> | <b>↑ 2.6%</b> | <b>1,963,489</b> | <b>1,854,139</b> | <b>↑ 5.9%</b> |

Source: USDA, Economic Research Service

### For more information, please contact

Francois Bédard  
Sector Specialist - Pork  
Animal Industry Division  
Francois.Bedard@CANADA.CA  
Tel.: 613-773-2027  
www.agr.gc.ca/redmeat