



Hog Statistics at a Glance - CANADA



For week ending November 19, 2016

Federal Slaughter

	Weekly kill # head	Cumulative totals to date		
		2016	2015	% chg
West	185 731	7 396 229	7 299 635	1.3%
East	257 829	10 683 524	10 396 255	2.8%
Canada	443 560	18 079 753	17 695 890	2.2%
Pork Production (t)	44 046	1 822 439	1 773 128	2.8%
Estimated Sow/Boar Slaughter (includes federal & provincial slaughter)	1 550	70 611	71 722	-1.5%

Source: CFIA

Weekly Prices (Index 100) \$/100kg

	2016	2015	% chg
British Columbia	N/A	165.95	
Alberta	102.90	129.20	-20.4%
Saskatchewan	101.08	127.06	-20.4%
Manitoba	125.00	141.64	-11.7%
Ontario**	149.48	170.33	-12.2%
Québec	120.30	151.51	-20.6%
New Brunswick	116.94	142.55	-18.0%
Nova Scotia	128.98	192.06	-32.8%
Prince Edward Island	122.48	160.40	-23.6%

Source: Provincial Marketing Boards, Provincial Governments

** Ontario hog price is a Dressed Weight (Total Value FOB yard) price, not Index 100

Pork Exports

Year to date for the period January 1 - September 30						
	2016	2015	% chg	2016	2015	% chg
	metric tonnes			Canadian \$ ('000)		
United States	296 949	330 176	-10.1%	1 096 510	1 092 076	0.4%
China	235 607	75 980	210.1%	430 940	130 336	230.6%
Japan	162 517	161 072	0.9%	783 601	692 735	13.1%
Mexico	84 297	87 664	-3.8%	139 507	127 534	9.4%
South Korea	31 503	32 360	-2.6%	84 747	75 545	12.2%
Philippines	21 598	23 171	-6.8%	39 861	42 086	-5.3%
Taiwan	14 511	32 826	-55.8%	30 338	57 321	-47.1%
Australia	14 219	21 252	-33.1%	52 224	73 995	-29.4%
Hong Kong	11 556	20 737	-44.3%	18 631	34 340	-45.7%
Chile	7 289	10 375	-29.7%	18 598	24 754	-24.9%
New Zealand	6 988	8 691	-19.6%	19 848	23 243	-14.6%
Cuba	4 215	2 888	45.9%	11 328	10 563	7.2%
Other	24 727	49 775	-50.3%	61 916	111 288	-44.4%
Total	915 976	856 967	6.9%	2 788 049	2 495 816	11.7%

Source: Statistics Canada

Live Hog Exports to U.S. (head)

Year to date November 12, 2016	2016	2015	% chg	Week ending November 12, 2016	2016	2015	% chg
Barrows/Gilts/Sows/Boars for Slaughter	857 153	960 801	-10.8%	Barrows/Gilts/Sows/Boars for Slaughter	20 572	25 489	-19.3%
Feeder Pigs	3 966 290	3 675 565	7.9%	Feeder Pigs	86 804	85 126	2.0%
Total	4 823 443	4 636 366	4.0%	Total	107 376	110 615	-2.9%

Source: USDA-APHIS

Pork Imports

Year to date for the period January 1 - November 19							
	2016	2015	% chg		2016	2015	% chg
metric tonnes				Pork Processed			
Fresh and Frozen Pork				United States	58 292	61 702	-5.5%
United States	94 729	98 308	-3.6%	Italy	1 582	1 228	28.8%
Spain	3 894	1 428	172.7%	China	668	658	1.5%
Germany	3 688	3 248	13.6%	Other	810	439	84.7%
Poland	3 598	2 248	60.0%	Total Processed	61 351	64 027	-4.2%
Denmark	2 065	1 946	6.1%	Pork Fat	1 048	416	152.1%
Other	4 592	3 809	20.6%	Total Imports	174 963	175 428	-0.3%
Total Fresh and Frozen	112 564	110 986	1.4%				

Source: CFIA

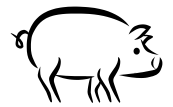
Please see livestock calendar at: <http://www.agr.gc.ca/redmeat> : weekly livestock report schedule/calendar.

Prepared by: Red Meat Section, Agriculture and Agri-Food Canada

Contact: François Bédard 613 773 2027 or francois.bedard@agr.gc.ca or visit us at <http://www.agr.gc.ca/redmeat>



Hog Statistics at a Glance - CANADA



Canadian Hog Slaughter by Province of Origin

Federal and provincial slaughter, year to date November 19, 2016

Week ending November 19, 2016

	2016	2015	% chg		2016	2015	% chg
preliminary							
British Columbia	182 123	165 039	10.4%	British Columbia	3 734	3 577	4.4%
Alberta	1 970 205	1 981 274	-0.6%	Alberta	46 706	41 512	12.5%
Saskatchewan	1 512 603	1 520 192	-0.5%	Saskatchewan	34 336	34 939	-1.7%
Manitoba	4 038 333	3 931 530	2.7%	Manitoba	103 970	73 380	41.7%
Ontario	4 675 344	4 514 249	3.6%	Ontario	116 244	103 506	12.3%
Quebec	6 402 843	6 266 195	2.2%	Quebec	153 440	157 407	-2.5%
New Brunswick	9 316	11 134	-16.3%	New Brunswick	249	10	
Nova Scotia	10 143	7 737	31.1%	Nova Scotia	254	201	26.4%
Prince Edward Island	38 229	51 617	-25.9%	Prince Edward Island	939	1 250	-24.9%
Canada	18 839 139	18 448 967	2.1%	Canada	459 872	415 782	10.6%

Source: CFIA and Provincial Governments

UNITED STATES

Year to date for the week ending November 19, 2016

Supply Summary

	2016	2015	% chg
YTD Slaughter ('000 head)	103 488	101 779	1.7%
YTD Pork Production (mil. of pounds)	21 849	21 618	1.1%
Week ending November 19, 2016			
Slaughter ('000 head)	2 531	2 394	5.7%
Avg Dressed Weight (lbs)	211	213	-0.9%
Pork Produced (mil lbs)	534	511	4.5%

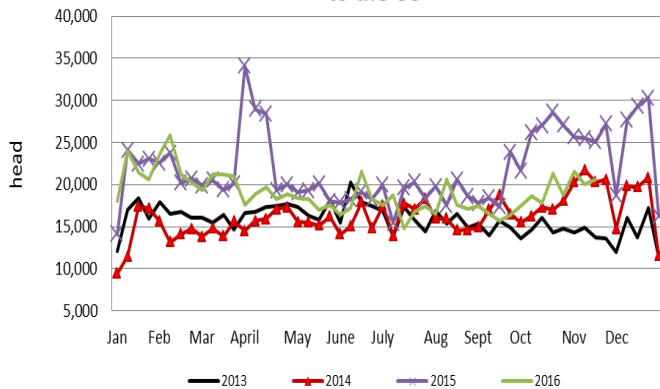
Weekly U.S. Prices (\$/cwt)

(weighted weekly average carcass)

	2016	2015	% chg
Iowa/Minnesota	48.15	57.37	-16.1%
Western Cornbelt	47.99	57.17	-16.1%
Eastern Cornbelt	51.23	58.49	-12.4%
National	48.84	57.47	-15.0%

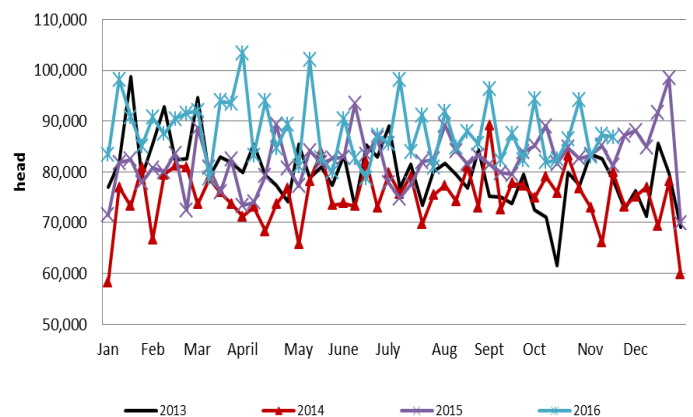
Source: USDA-APHIS

Canadian Market Hog, Sow/Boar Exports for Slaughter to the US



Source: USDA-APHIS

Canadian Feeder Hog Exports to the US



Source: USDA-APHIS