



# Hog Statistics at a Glance - CANADA



For week ending October 22, 2016

## Federal Slaughter

	Cumulative totals to date			
	Weekly kill	2016	2015	% chg
	# head	# head		
West	179 227	6 713 415	6 637 026	1.2%
East	259 455	9 654 888	9 422 279	2.5%
<b>Canada</b>	<b>438 682</b>	<b>16 368 303</b>	<b>16 059 305</b>	<b>1.9%</b>
Pork Production (t)	<b>43 561</b>	<b>1 649 925</b>	<b>1 609 142</b>	<b>2.5%</b>
Estimated Sow/Boar Slaughter (includes federal & provincial slaughter)	<b>1 428</b>	<b>64 171</b>	<b>65 507</b>	<b>-2.0%</b>

Source: CFIA

## Weekly Prices (Index 100) \$/100kg

	2016	2015	% chg
British Columbia	119.70	181.90	-34.2%
Alberta	113.90	171.70	-33.7%
Saskatchewan	112.18	169.55	-33.8%
Manitoba	132.00	169.98	-22.3%
Ontario**	154.41	200.19	-22.9%
Québec	127.00	177.91	-28.6%
New Brunswick	124.58	175.43	-29.0%
Nova Scotia	134.83	184.27	-26.8%
Prince Edward Island	128.52	179.04	-28.2%

Source: Provincial Marketing Boards, Provincial Governments

\*\* Ontario hog price is a Dressed Weight (Total Value FOB yard) price, not Index 100

## Pork Exports

Year to date for the period January 1 - August 31						
	2016	2015	% chg	2016	2015	% chg
	metric tonnes			Canadian \$ ('000)		
United States	263 822	291 019	-9.3%	977 861	952 916	2.6%
China	211 550	60 559		384 780	102 031	
Japan	141 577	140 078	1.1%	678 678	598 842	13.3%
Mexico	73 396	78 409	-6.4%	120 578	113 359	6.4%
South Korea	27 476	28 852	-4.8%	74 950	68 035	10.2%
Philippines	19 031	19 722	-3.5%	34 687	35 396	-2.0%
Taiwan	12 824	29 595	-56.7%	26 203	51 407	-49.0%
Australia	12 107	19 289	-37.2%	44 490	66 895	-33.5%
Hong Kong	10 889	17 842	-39.0%	16 867	29 275	-42.4%
Chile	6 771	9 598	-29.5%	17 195	22 756	-24.4%
New Zealand	6 199	8 051	-23.0%	17 652	21 618	-18.3%
Cuba	3 500	2 638	32.7%	9 670	9 520	1.6%
Other	21 682	45 979	-52.8%	53 856	102 477	-47.4%
<b>Total</b>	<b>810 826</b>	<b>751 631</b>	<b>7.9%</b>	<b>2 457 467</b>	<b>2 174 527</b>	<b>13.0%</b>

Source: Statistics Canada

## Live Hog Exports to U.S. (head)

Year to date October 15, 2016	2016	2015	% chg	Week ending October 15, 2016	2016	2015	% chg
Barrows/Gilts/Sows	776 212	854 014	-9.1%	Barrows/Gilts/Sows	21 304	27 002	-21.1%
Feeder Pigs	3 615 010	3 339 620	8.2%	Feeder Pigs	86 373	81 627	5.8%
<b>Total</b>	<b>4 391 222</b>	<b>4 193 634</b>	<b>4.7%</b>	<b>Total</b>	<b>107 677</b>	<b>108 629</b>	<b>-0.9%</b>

Source: USDA-APHIS

## Pork Imports

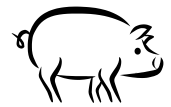
Year to date for the period January 1 - October 22							
	2016	2015	% chg		2016	2015	% chg
metric tonnes				Pork Processed			
Fresh and Frozen Pork				United States	53 346	56 958	-6.3%
United States	85 800	89 304	-3.9%	Italy	1 371	1 050	30.6%
Poland	3 339	2 057	62.3%	China	627	609	3.0%
Germany	3 438	3 001	14.6%	Other	704	402	75.0%
Spain	3 647	1 208		<b>Total Processed</b>	<b>56 048</b>	<b>59 019</b>	<b>-5.0%</b>
Denmark	1 888	1 728	9.3%	Pork Fat	891	416	
Other	4 397	3 461	27.0%	<b>Total Imports</b>	<b>159 448</b>	<b>160 194</b>	<b>-0.5%</b>
<b>Total Fresh and Frozen</b>	<b>102 509</b>	<b>100 759</b>	<b>1.7%</b>				

Source: CFIA

Please see livestock calendar at: <http://www.agr.gc.ca/redmeat> : weekly livestock report schedule/calendar.



# Hog Statistics at a Glance - CANADA



## Canadian Hog Slaughter by Province of Origin

Federal and provincial slaughter, year to date October 22, 2016

Week ending October 22, 2016

	2016	2015	% chg		2016	2015	% chg
<b>preliminary</b>							
British Columbia	165 761	149 188	11.1%	British Columbia	3 458	3 242	6.7%
Alberta	1 794 093	1 803 651	-0.5%	Alberta	46 370	36 828	25.9%
Saskatchewan	1 381 507	1 379 350	0.2%	Saskatchewan	38 596	29 700	30.0%
Manitoba	3 656 881	3 584 992	2.0%	Manitoba	94 777	78 407	20.9%
Ontario	4 220 553	4 108 289	2.7%	Ontario	115 222	85 126	35.4%
Quebec	5 788 410	5 651 498	2.4%	Quebec	154 259	121 556	26.9%
New Brunswick	8 390	10 670	-21.4%	New Brunswick	201	207	-2.9%
Nova Scotia	9 243	6 849	35.0%	Nova Scotia	224	198	13.1%
Prince Edward Island	34 453	47 672	-27.7%	Prince Edward Island	1 119	694	61.2%
<b>Canada</b>	<b>17 059 291</b>	<b>16 742 159</b>	<b>1.9%</b>	<b>Canada</b>	<b>454 226</b>	<b>355 958</b>	<b>27.6%</b>

Source: CFIA and Provincial Governments

## UNITED STATES

Year to date for the week ending October 22, 2016

### Supply Summary

	2016	2015	% chg
YTD Slaughter ('000 head)	93 556	92 375	1.3%
YTD Pork Production (mil. of pounds)	19 748	19 613	0.7%
<b>Week ending October 22, 2016</b>			
Slaughter ('000 head)	2 514	2 322	8.3%
Avg Dressed Weight (lbs)	210	212	-0.9%
Pork Produced (mil lbs)	527	493	7.0%

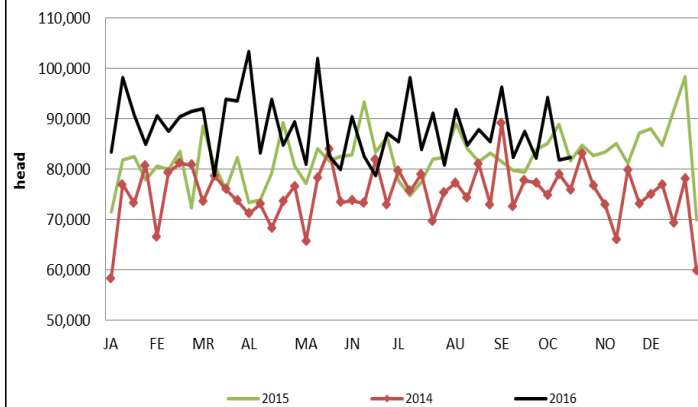
### Weekly U.S. Prices (\$/cwt)

(weighted weekly average carcass)

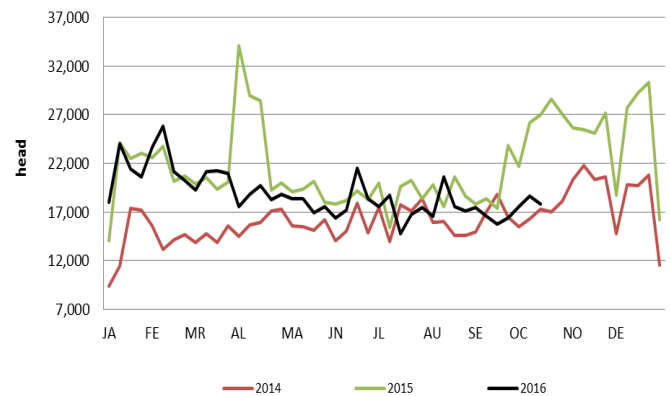
	2016	2015	% chg
Iowa/Minnesota	52.14	72.39	-28.0%
Western Cornbelt	51.98	72.45	-28.3%
Eastern Cornbelt	53.54	73.11	-26.8%
National	52.38	72.64	-27.9%

Source: USDA-APHIS

### Canadian Feeder Hog Exports to the US



### Canadian Market Hog + Sow/Boar Exports to the US



Source: USDA-APHIS